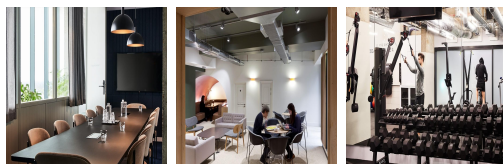
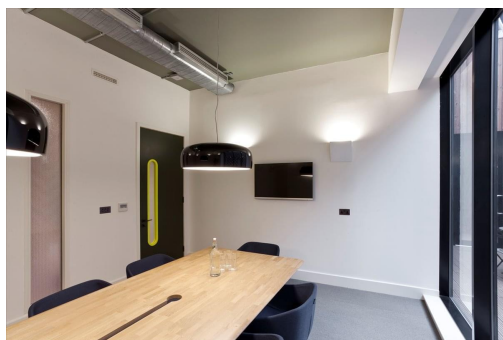


Serviced Office Space UK

7 Stratford Place

London W1C 1AY



This period Georgian building is accessed from Stratford Place, a cul-de-sac directly opposite Bond Street tube. A plethora of local amenities is close-by, and the address is easily accessible from across the capital and beyond. This building has two addresses meaning two choices of entrance when having your office here. Selfridges is located just steps away from the centre, great for undertaking some retail therapy after work. There are various places to enjoy a lunch, and drinks after work can take place at a number of nearby venues.

Two contrasting buildings from very different periods have been combined into one office building. It links through to a more modern office building constructed in the 1970s which fronts on to Marylebone Lane. Architects Wells Mackereth have had the challenge of combining the two styles and creating design-led space. As well as a range of office sizes and meeting and conferencing space, this building will also feature the club's drop-in, shared working and lounge areas. Other amenities include air conditioning, kitchen facilities, administrative support and reception services on hand to welcome visitors.

transport links

Underground	Oxford Circus
Train Station	Euston Station
Road Link	N/A
Airport	London City Airport

Coworking Spaces

- **Price** : £425 pcm
- **Min Price** : £425 pcm
- **Total Size** : 10 wkstns
- **Min Term** : 3 mnths
- **Max Term** : 36 mnths