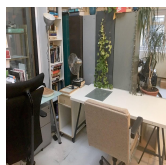
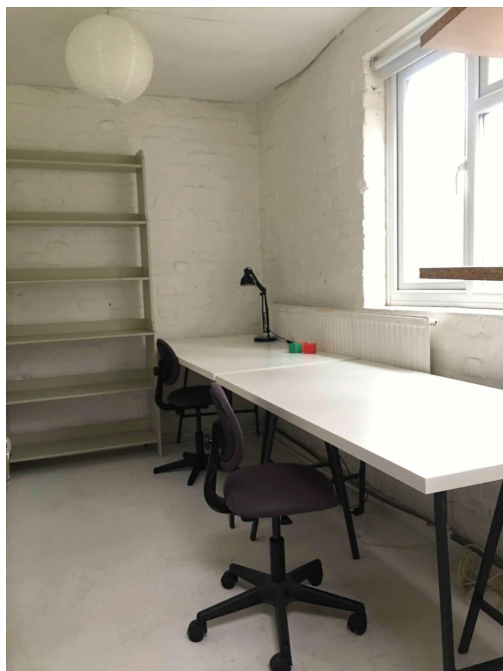


Serviced Office Space UK

127a Elderfield Road

London E5 0AY



Situated in a prime location in London, surrounding the space are many facilities like eateries, where tenants can enjoy a lunch break or an evening of entertaining clients. The regional transport links are also excellent and provide all prospective tenants with a range of frequent and convenient services throughout the area. The centre is accessible from almost every transport link, placing tenants and their teams in a well-connected and easily accessible location. With everything on the doorstep of this business centre, there are also many recreational activities around the corner.

The refined design and stunning landmark architecture are locally renowned as a commercially significant business establishment incorporating a neutral palette, international style, and industrial materials to create an elegant and fun workspace. Spacious, fully-furnished offices offer a team somewhere to work comfortably, where members can move in and get started - no need for time wasted setting up various desks. This amenity-rich complex is the perfect location for any business seeking a modern workspace to thrive. This state-of-the-art centre provides an excellent platform for any business to flourish with its cost-effective workplace solutions.

transport links

| | |
|----------------------|--------------------------|
| Underground | Victoria Station |
| Train Station | Liverpool Street Station |
| Road Link | N/A |
| Airport | London City Airport |

Coworking Spaces

- **Price** : Â£195 pcm
- **Min Price** : Â£195 pcm
- **Total Size** : 10 wkstns
- **Min Term** : 1 mnths
- **Max Term** : 12 mnths