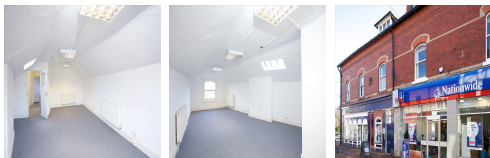


Serviced Office Space UK

1-3 Grove Street

Wilmslow SK9 1DU



This period property is located opposite Natwest bank on the pedestrianised Grove Street which is the main shopping location within Wilmslow Town Centre. It comprises of a wide variety of retailers including Boots, WH Smiths, Monsoon and Waterstones amongst other fashion retailers and various sandwich shops and deli's. Wilmslow Train Station is a 2 minute walk away from 1-3 Grove Street, providing regular services to Manchester Piccadilly and Manchester Airport, as well as frequent services to London Euston. A34 bypass allowing easy access to Manchester City Centre - 30 min drive-time. Easy access to M60 and M6 motorway connections. A538 to Manchester Airport - 12 min drive-time. Direct train services to London every 20 minutes from Wilmslow Station, allowing you to get to the Capital in under 2 hours.

The offices on Grove Street are ideal for start-up businesses or business owners who are looking for an office close to home. The suites are available on flexible annual lease terms on an all-inclusive rental. At present there are two suites available which can be taken together featuring private WC and kitchen facilities, or alternatively the suites can be taken separately meaning shared kitchen and WC facilities. Parking is available at multiple locations nearby with the nearest car park at Waitrose.

transport links

Underground	N/A
Train Station	Manchester Airport
Road Link	N/A
Airport	Manchester Airport

Leased Spaces

- **Price** : Â£3 pcm
- **Min Price** : Â£3 pcm
- **Min Size** : 1 sq ft
- **Max Size** : 3 sq ft
- **Total Size** : 95 sq ft
- **Min Term** : 12 mnths