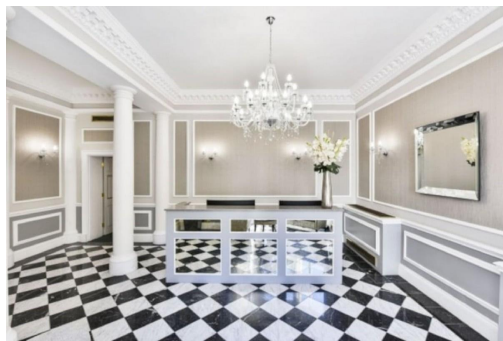


Serviced Office Space UK

23 Berkeley Square

London W1J 6HE



This workspace is in the heart of London. Berkeley Square is one of the West End's best-known locations in the heart of Mayfair. This business centre is located discreetly on the corner of the square and offers a fantastic base for any prestigious organisation. Transport links are excellent in London, with Underground Stations, National Rail Stations and bus services across the city. The centre is accessible from almost every transport link, placing tenants and their teams in a well-connected and easily accessible location.

This workspace has fully furnished offices and suites over seven floors, with many benefiting from stunning views of the leafy square below. Offices are available for requirements of 1-20 desks on short flexible terms for a single monthly fee. The building also benefits from three executive boardrooms and video-conferencing facilities. The refined design and stunning landmark architecture are locally renowned as a commercially significant business establishment incorporating a neutral palette, international style, and industrial materials to create an elegant and fun workspace. This ultra-modern business centre has amenities that are affordable and meaningful.

transport links

Underground
Train Station
Road Link
Airport

Bond Street
Oxford Circus Underground Station
M4 jnct 1
London City Airport

Coworking Spaces

- **Price** : £125 pcm
- **Min Price** : £125 pcm
- **Total Size** : 10 wkstns
- **Min Term** : 3 mnths
- **Max Term** : 36 mnths