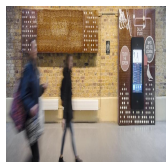
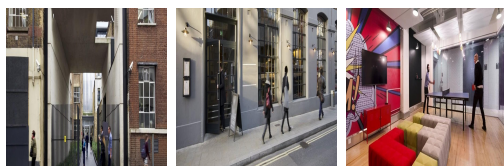
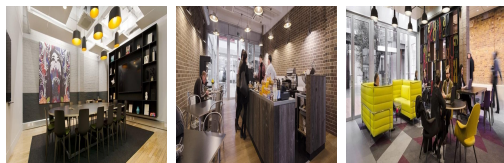
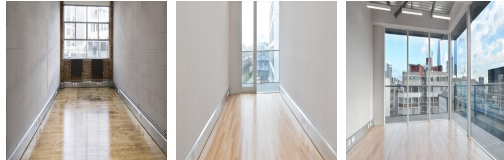
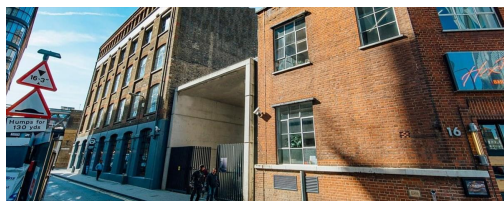


Serviced Office Space UK

30 Great Guildford Street

London SE1 0HS



This impressive building is situated at the southern end of Great Guildford Street, which is bisected by Southwark Street, the main link road between Blackfriars, Southwark and London Bridge. Surrounded by a variety of local bars and restaurants, and only moments away from Borough Market, this site is ideal for businesses looking to be in a fashionable yet business-orientated working environment. Southwark (Jubilee), Borough (Northern), London Bridge (Northern, Jubilee and mainline rail) and Waterloo (Northern and mainline rail) stations are all in close proximity.

The centre has been a redevelopment of a landmark destination, ready for 150 new and growing businesses. A former Factory, the property has maintained many of its quirky historical features and is ideal for companies wanting an office/studio with a creative twist in a business-orientated location. The on-site management team are on hand to help with your needs and requirements and other amenities include the availability of meeting rooms, lift access, IT support, conference facilities and bike racks for those cycling into the office. The space is accessible 24-hours a day and has a security system.

transport links

Underground	London Bridge
Train Station	London Bridge Underground Station
Road Link	N/A
Airport	London City Airport

Leased Spaces

- **Price** : Â£2 pcm
- **Min Price** : Â£2 pcm
- **Min Size** : 2 sq ft
- **Max Size** : 50 sq ft
- **Total Size** : 20579 sq ft
- **Min Term** : 6 mnths
- **Max Term** : 24 mnths