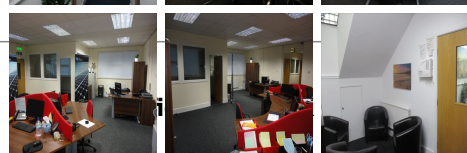
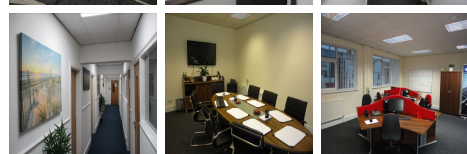
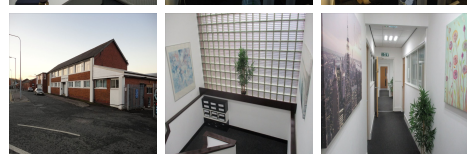
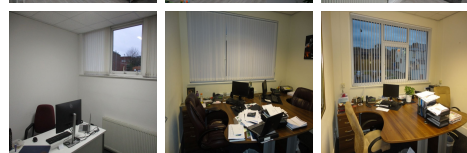
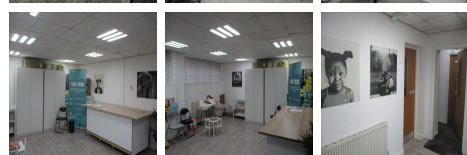
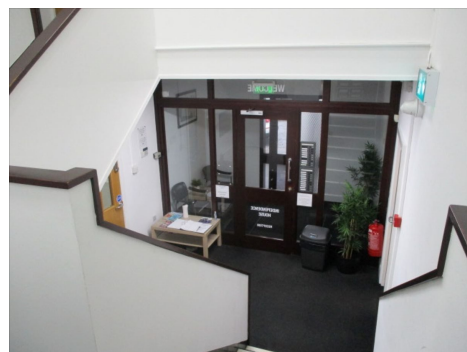


Serviced Office Space UK

Adelaide Street

Heywood OL10 4HF



This multi-occupied serviced office centre is in a central location and has excellent motorway, train and bus links. Heywood is only 2 miles from central Rochdale, Bury and Middleton. Offices are close to Tesco Supermarket, Esso Petrol Station Cafes, Banks, Post Office and Town Centre. Close to junction 19 off the M62 and Close to junction-2 off the M66 Heap Bridge Interchange. The workspace is in a location which has excellent social clubs & Networking Opportunities.

This Business Centre provides total flexibility for businesses and organizations wishing to establish or expand their presence quickly and simply. This centre is a modern building with a total of 23 office units of various sizes. Accommodation is on short-term office agreements avoiding the need for expensive legal bills whilst providing flexibility for current business needs. The impressive modern building offers office space ranging from 100 to 5000 sq ft and is ideal for companies seeking a cost-effective business solution. Essential business operations are seamlessly supported, with administrative, IT, and reception assistance available to ensure operational efficiency.

transport links

| | |
|---------------|--------------------|
| Underground | N/A |
| Train Station | Castleton |
| Road Link | York Street |
| Airport | Manchester Airport |

Virtual Office

- **Price** : Â£69 pcm
- **Min Price** : Â£69 pcm
- **Min Term** : 1 mnths
- **Max Term** : 12 mnths