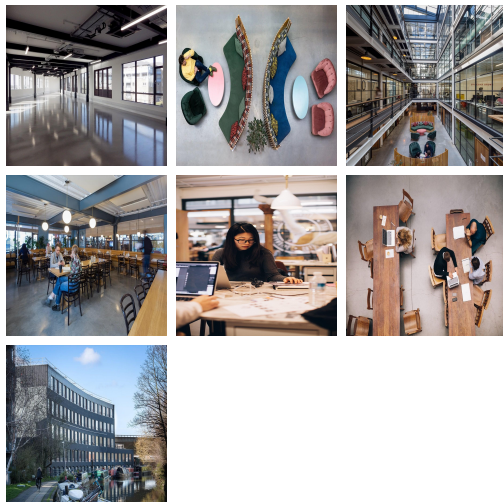


Serviced Office Space UK

London W2 5EU



The workspace is situated in the heart of London, placing tenants and their teams in a well-connected and easily accessible location. Westbourne Park and Royal Oak Tubes are minutes away, and Paddington station can be reached via a picturesque walk in 10 minutes along the canal via Little Venice. Harrow Road is also home to banking services, supermarkets, shops, and eateries providing easy access to essential amenities. This dynamic environment makes it an ideal setting for professionals, even those commuting from the farthest corners of the wider region.

This well-established luxury business centre offers many inclusive facilities and services to clients. Facilities here include fully furnished offices with high-speed internet, parking space, meeting space, professional-grade daily cleaning, reception services, IT support and telecom services, administrative support, beverages, and much more. The centre is accessible 24 hours daily, enabling the clients to work flexibly. There are lounges and breakout areas where tenants can take a break during a hectic workday. This centre is a great space that has been designed to meet the demands of any modern business.

transport links

Underground	Westbourne Park
Train Station	Euston Station
Road Link	N/A
Airport	London City Airport

Coworking Spaces

- **Price** : Â£355 pcm
- **Min Price** : Â£355 pcm
- **Total Size** : 12 wkstns
- **Min Term** : 1 mnths
- **Max Term** : 12 mnths