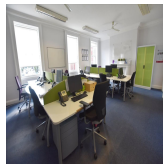
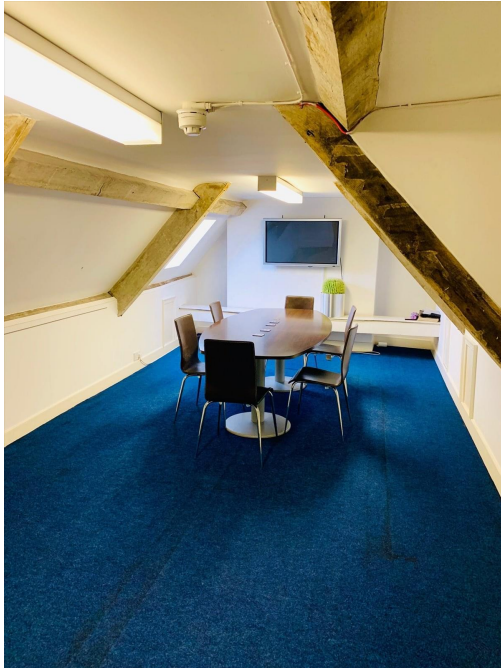


Serviced Office Space UK

Worcester WR1 1DS



This centre is located in the heart of Worcester, placing tenants and their teams in a well-connected and easily accessible location. With proximity to Worcester city centre, clients will have an abundance of lunchtime dining, drinking and retail options. Nearby neighbours include the County Court, Magistrates Court and Police Station. Tenants are also less than 200 yards from the train station – served by Great Western Railway and West Midland Trains – offering access to numerous cities across the UK. There is also a Pay and Display car park at the foot of nearby Castle Street, and Junctions 6 and 7 of the M5 are very close by.

This centre provides office suites and individual offices to rent throughout the building, with some benefiting from allocated car parking spaces to the rear of the property. The building benefits from gas central heating, a secure entry system and shared toilet and kitchen facilities. Tenants will benefit from a light and airy space – allowing clients to maximise their efficiency. The centre boasts an all-inclusive rate which consists of rent, utilities, weekly cleaning and security. The centre also boasts private, high-speed fibre broadband – meaning no connectivity issues. With 24-hour access, tenants can set and adhere to their work schedules.

transport links

Underground	N/A
Train Station	Worcester Foregate Street
Road Link	N/A
Airport	Gloucestershire Airport

Serviced Offices

- **Price** : £150 pcm
- **Min Price** : £150 pcm
- **Min Size** : 1 wkstns
- **Max Size** : 10 wkstns
- **Total Size** : 30 wkstns
- **Min Term** : 3 mnths
- **Max Term** : 36 mnths