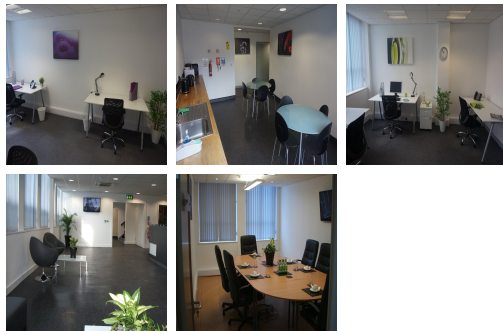
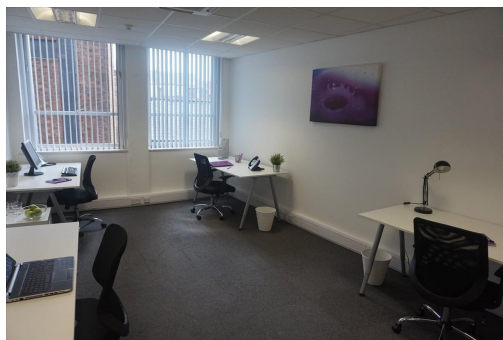


# Serviced Office Space UK

---

## 21 Broad Street

Bury BL9 0DA



This centre is located in the heart of Bury, placing tenants and their teams in a well-connected and easily accessible location. This centre is close to several restaurants and retail outlets, within a two-minute walk of public transport interchange and opposite an entrance to The Millgate Shopping Centre. Metered street parking is available outside, and motorway access is within approximately 1.5 miles (M66, junction 2). Bury is around 9 miles from Manchester city centre. Fantastic transport links are available due to the central location of this space.

The office is fully furnished with contemporary white furniture to give a modern and fresh feel. The beautifully designed office spaces empower teams and companies for growth with high ceilings and large windows that provide natural lighting. The centre offers several facilities, such as high-speed internet, professional meeting rooms, concierge services, mail handling, business-class printers, a beautiful kitchen, and professional-grade daily cleaning. This building is a wonderland for all things digital – providing an ever-expanding hub of creatives with never-ending networking opportunities.

### transport links

<b>Underground</b>	N/A
<b>Train Station</b>	East Lancashire Railway
<b>Road Link</b>	N/A
<b>Airport</b>	Manchester Airport

### Serviced Offices

---

- **Price** : £375 pcm
- **Min Price** : £375 pcm
- **Min Size** : 2 wkstns
- **Max Size** : 30 wkstns
- **Total Size** : 160 wkstns
- **Min Term** : 3 mnths
- **Max Term** : 60 mnths