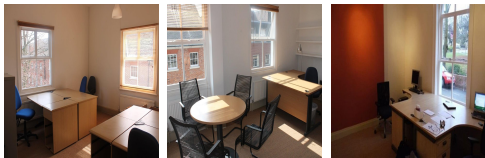
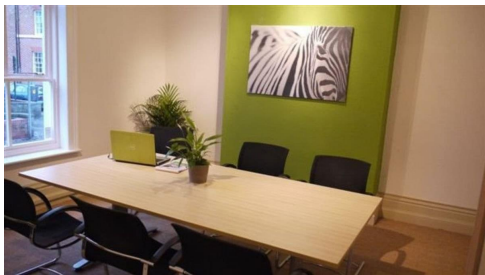


Serviced Office Space UK

5 Museum Square

Leicester LE1 6UF



Located in the heart of the City of Leicester. In close proximity to many shops, bars and restaurants. This is an extremely well-positioned centre within five minutes walk of Leicester railway station. This prime city centre location has the benefit of housing members' business in the heart of Leicester's thriving business community and amidst a number of outstanding cafes, bars and shops that members would expect to see in any bustling, metropolis environment. The centre has recently undergone extensive modernisation and refurbishment to create the perfect, cutting-edge environment for their business.

Spacious, high-quality, competitively priced serviced offices available for rent in the city area. The office spaces have been refurbished to a high standard, with individual rooms available for as little as £50 a week, inclusive of utilities. Phone lines and Internet Broadband can be made available at a small additional cost. Car parking can also be arranged on-site or at a nearby facility at rates starting from just £3.50 per day. Take advantage of professional meeting rooms to ensure members create the right impression for their clients, giving extra confidence to place new business with their company. A fitted kitchen facility is also available for preparing light meals and beverages.

transport links

Underground	Subway Leicester
Train Station	Subway Leicester
Road Link	A6030
Airport	East Midlands Airport

Serviced Offices

- **Price** : Â£150 pcm
- **Min Price** : Â£150 pcm
- **Min Size** : 1 wkstns
- **Max Size** : 100 wkstns
- **Total Size** : 100 wkstns
- **Min Term** : 3 mnths
- **Max Term** : 36 mnths