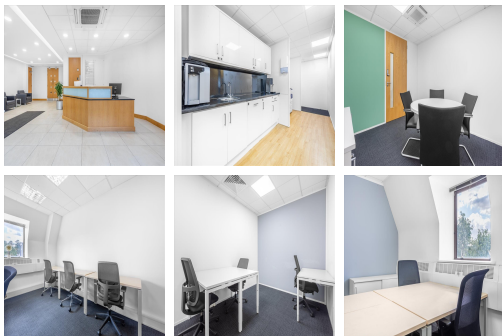


# Serviced Office Space UK

---

## Horsham RH12 1 TL



Horsham is a gem in the very heart of West Sussex, a historic market town offering the best of both worlds with rich history and architectural heritage. Outstanding parkland and beautiful countryside including Horsham Park, Riverside Walk and Warnham Local Nature Reserve. Horsham also has two golf courses located a mile from the centre. With much of the town pedestrianised you will be greeted with several pavement cafés, award-winning floral displays and markets. Frequent and direct train services to London Victoria via Croydon, Gatwick and Crawley.

This fantastic newly refurbished business centre is situated in a beautiful wooded riverside setting, providing the perfect location for a range of businesses. There are fully serviced offices available on flexible terms, with air-conditioning, reception services and support teams, access to kitchen areas, state-of-the-art technology and on-demand meeting rooms provided as standard. As well as the range of amenities on-site, the nearby area also offers useful facilities. The business centre offers all-inclusive pricing, so you can move in with peace of mind that there will be no unexpected costs each month.

### transport links

<b>Underground</b>	SUBWAY Crawley
<b>Train Station</b>	Christ's Hospital
<b>Road Link</b>	N/A
<b>Airport</b>	Gatwick Airport

### Virtual Office

---

- **Price** : £69 pcm
- **Min Price** : £69 pcm
- **Min Term** : 24 mnths
- **Max Term** : 999 mnths