

# Serviced Office Space UK

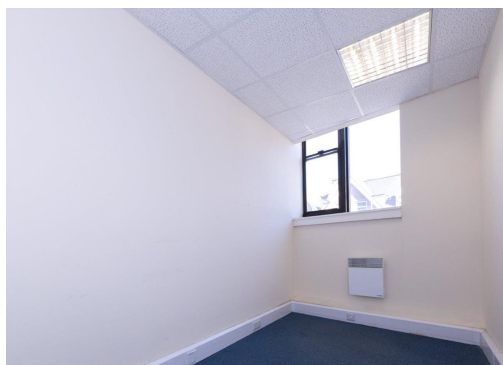
---

## 207-211 The Vale

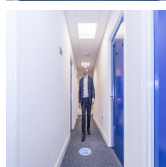
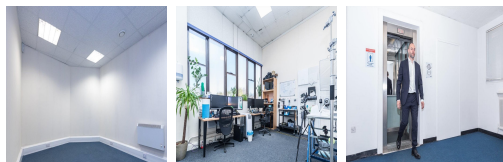
London W3 7QS



This workspace is opposite Acton Park and just a minute's walk from Acton Town Centre. Several buses serve Acton Vale, and the A40 and M4 are within easy reach. Travel time to Heathrow Airport is approximately 20 minutes, and the offices are outside both the Congestion Charging and Low Emission Zones, with on-site parking available for office tenants. The regional transport links are also excellent and provide all prospective tenants with a range of frequent and convenient services throughout the area.



The refined design and stunning landmark architecture are locally renowned as a commercially significant business establishment incorporating a neutral palette, international style, and industrial materials to create an elegant and fun workspace. Spacious, fully-furnished offices offer a team somewhere to work comfortably, where members can move in and get started - no need for time wasted setting up various desks. This stylish contemporary building has an entrance that makes a statement as the first impression for guests. This amenity-rich complex is the perfect location for any business seeking a modern workspace to thrive.



### transport links

<b>Underground</b>	Victoria Station
<b>Train Station</b>	Acton Central
<b>Road Link</b>	N/A
<b>Airport</b>	Heathrow Airport

### Leased Spaces

---

- **Min Size** : 1 sq ft
- **Max Size** : 10 sq ft
- **Total Size** : 10000 sq ft
- **Min Term** : 3 mnths
- **Max Term** : 12 mnths