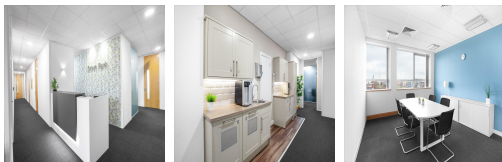
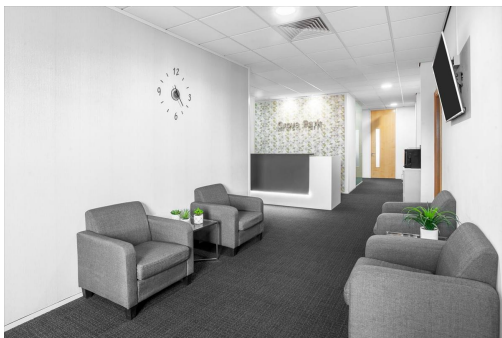


# Serviced Office Space UK

---

## Grove Business Park

Leicester LE19 1SY



This centre is conveniently located immediately off the junction with the M1 and M69 Motorways. Leicester city centre is a 10-minute drive and the motorways are less than 5 minutes away. Clients can enjoy the use of a number of nearby food outlets as well as refreshments delivered directly to the centre. Situated on the thriving Grove Park Business Park, this centre is close to a variety of amenities including two major supermarkets, a shopping centre with food court and a number of hotels. Neighbouring companies include HSBC, Royal Bank of Scotland and Sytner, with the NHS also having a prolific presence on the park

With a modern reception area with satellite television and business lounge, this truly is a professional and high-spec office environment. The building also provides superb fully serviced offices on flexible terms, with air-conditioning, reception staff and support teams, kitchen facilities, state-of-the-art technology and 14 meeting rooms that can cater from 2 to 186 delegates. This centre offers all-inclusive pricing, so you can move in with peace of mind that there will be no unexpected costs each month. 24-hour access allows for flexibility with working hours - ideal in the modern business world.

### transport links

<b>Underground</b>	Subway Leicester
<b>Train Station</b>	Narborough
<b>Road Link</b>	N/A
<b>Airport</b>	East Midlands Airport

### Virtual Office

---

- **Price** : Â£89 pcm
- **Min Price** : Â£89 pcm
- **Min Term** : 24 mnths
- **Max Term** : 999 mnths