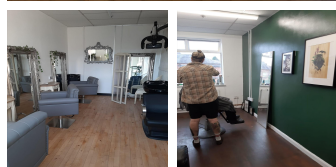


Serviced Office Space UK

4 Hawley Road

Hinckley LE10 0PR



Conveniently located in the heart of Hinckley, placing clients and their teams in a thriving area buzzing with activity. The centre is situated in the Hawley Road area of Hinckley, close to the Railway Station. This centre provides excellent links to all major routes in the area and is close to a supermarket. The centre is accessible from almost every transport link, placing tenants and their teams in a well-connected and easily accessible location. The centre has shopping complexes, restaurants, cafes, and other local amenities nearby.

This centre is a great space that has been designed to meet the demands of any modern business. The centre provides on-site management to take care of the building, giving occupants the time to develop and grow their businesses. The space is focused on bringing together people, business, talent, and support in a vibrant hub and provides a smooth access workspace plus a range of support dedicated to the client's work. This business centre offers high-speed internet, parking space, meeting rooms, administrative support, beverages, and fantastic transport links. The centre is accessible 24 hours a day, allowing the clients to work flexibly.

transport links

Underground	SUBWAY Coventry
Train Station	Hinckley
Road Link	N/A
Airport	Coventry Airport

Virtual Office

- **Price** : Â£10 pcm
- **Min Price** : Â£10 pcm
- **Min Term** : 1 mnths
- **Max Term** : 48 mnths