

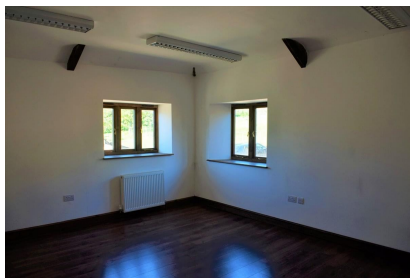
Serviced Office Space UK

The Threshing Barn and the Stable Yard offices

Honiton EX14 4TP



This office space is 1.5 miles north east of Honiton. It is located 3-minutes from the A30 and Honiton, 8-minutes from the A303 and 15-minutes from the M5 and Exeter Airport. The Business center is located on an award winning diversified farm located in the Blackdown Hills an area of outstanding natural beauty. rolling Hills and parkland Hills can be seen from office windows and access to the 150 acres of parkland and ancient woodland is available. The 19th century stone barns have been converted over a 10 year period the most recent was converted in 2014. We have a meeting space and conference facility as well as B and B and Self Catering accommodation. There is a happy long term community of tenants from the NFU Mutual through to a successful Pilates coach and a successful art gallery run by the landlord.



This centre has a collection of office units that are modern in design and are located in three Grade II Listed nineteenth-century stone barns. There are a total of 11 office units that vary in size from 132 to 528 sq ft with an additional larger suite of 2,400 sq ft available which can be split in two. The terms are flexible and the offices would be very suitable for start-ups, small businesses that are growing, and businesses that are looking for competitive rental terms. The property offers meeting rooms, as well as the added benefit of parking spaces for those commuting by car, and for visitors. EPC Rating D.

transport links

Underground	N/A
Train Station	Honiton
Road Link	N/A
Airport	Exeter International Airport

Leased Spaces

- **Price** : £12 pcm
- **Min Price** : £12 pcm
- **Min Size** : 2 sq ft
- **Max Size** : 11 sq ft
- **Total Size** : 2204 sq ft
- **Min Term** : 24 mnths
- **Max Term** : 60 mnths

