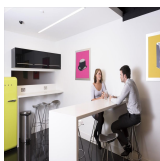
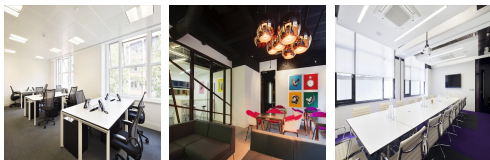


Serviced Office Space UK

3 Lloyd's Avenue

London EC3N 3DS



The building is located in the heart of the insurance district in London City and is a five-minute walk from the building. This centre is within a two-minute walk to Fenchurch Street, Aldgate and Tower Hill stations, and Tower Gateway. Amenities in the local area include excellent places to eat and drink, such as the Natural Kitchen, Tank and Paddle Minster Court and Habit. There are hotels very close by, including the Double Tree by Hilton. The regional transport links are also excellent and provide all prospective tenants with a range of frequent and convenient services throughout the area.

This centre is a great space designed to meet the demands of any modern business. The beautifully designed office spaces empower teams and companies for growth with high ceilings and large windows that provide natural lighting. Facilities include a roof terrace, a professionally staffed reception area, comfortable, modern lounge areas, kitchens on every floor, shower facilities, bike storage, 24-hour access and lots more. The property consists of 270 workstations and can accommodate any requirement. This building is a wonderland for all things digital – providing an ever-expanding hub of creatives with never-ending networking opportunities.

transport links

Underground	Tower Hill
Train Station	Tower Hill Underground Station
Road Link	N/A
Airport	London City Airport

Serviced Offices

- **Price** : Â£575 pcm
- **Min Price** : Â£575 pcm
- **Min Size** : 2 wkstns
- **Max Size** : 20 wkstns
- **Total Size** : 284 wkstns
- **Min Term** : 3 mnths
- **Max Term** : 36 mnths