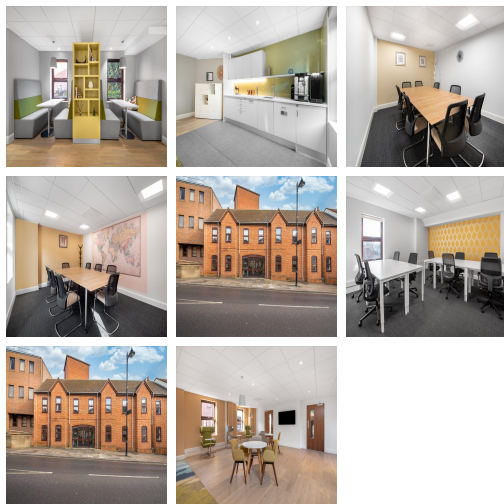


Serviced Office Space UK

Newbury RG14 1JB



Newbury is situated on the main crossroads between London and the West country, the south coast and the Midlands. It's possible to reach London, Bristol and Bournemouth in an hour's drive. Newbury is evolving from a rural market town into an increasingly sophisticated cultural centre, with a vibrant arts community supported by theatres, an arts festival, orchestras, and a profusion of eating and drinking outlets. In addition, the town boasts a top quality racecourse. The business centre is located in the heart of this historic market town in a bright modern four-storey building.

This is a bright and modern four-storey building comprising over 14,000 sq ft. In a unique venture, this building offers clients a wide choice of space. This is to match the local area business demographic, which is a mixture of established companies who just need the space and start-up businesses who may require a more managed solution. Fully equipped for every kind of business with all the facilities you need, including IT/telecoms, meeting rooms, couriers, stationery and a fully staffed reception desk during office hours. This centre offers all-inclusive pricing, so you can move in with peace of mind that there will be no unexpected costs each month.

transport links

Underground	N/A
Train Station	Newbury
Road Link	N/A
Airport	RAF Benson

Virtual Office

- **Price** : £59 pcm
- **Min Price** : £59 pcm
- **Min Term** : 24 mnths
- **Max Term** : 999 mnths