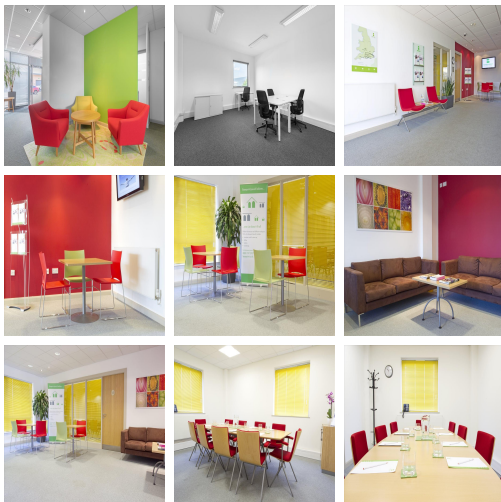
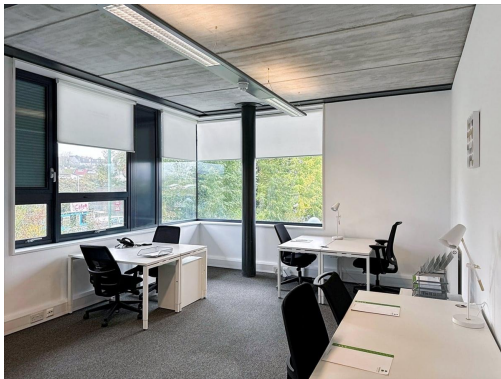
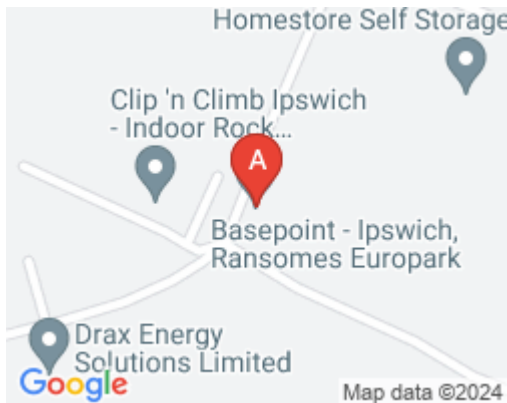


Serviced Office Space UK

Ipswich IP3 9BF



Situated on the popular Ransomes Europark business park development, next to the A14 and close to the A12 with excellent road and rail links to the Port of Felixstowe, East Anglia and the Midlands. This centre is located alongside Holiday Inn, David Lloyd gym and many local amenities and benefits from excellent transport links and a well-serviced bus route directly from the town centre. In the town centre, Ipswich Railway Station offers regular, direct services to Norwich, and London Liverpool Street.

This managed office is located in a purpose built modern, established business centre of 26,000sqft. It has offices and light-industrial workspaces available on easy-in/easy-out agreements to suit 1-20 people. With extensive secure on-site parking for licensees and visitors and 24-hour access, this centre provides unique workspaces with the latest technology and dedicated broadband ready to plug and go. With offices of varying sizes, bright and spacious breakout areas and meeting rooms this centre has been designed to enable your business to grow. Each office is fitted with carpets and blinds and is available furnished or unfurnished. The centre also provides extensive copying and postage facilities. Winner of the Business Centre Association Award for Best Workspace 2010 the on-site management and maintenance team are available to assist with your requirements and provide unique networking opportunities.

transport links

Underground	N/A
Train Station	Ipswich
Road Link	N/A
Airport	Wattisham Airfield

Virtual Office

- **Price** : Â£65 pcm
- **Min Price** : Â£65 pcm
- **Min Term** : 24 mnths
- **Max Term** : 999 mnths