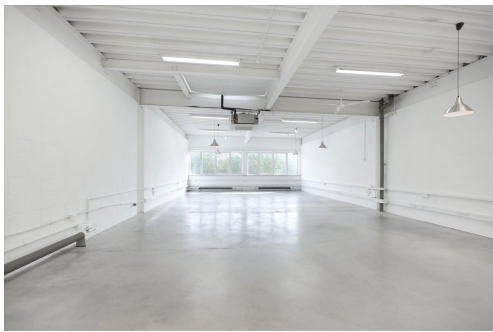


Serviced Office Space UK

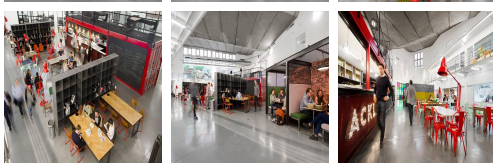
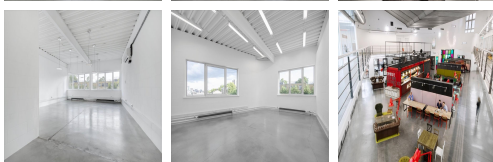
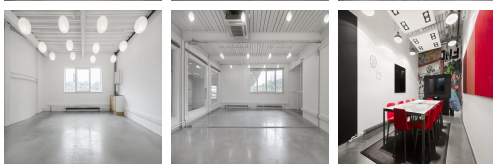
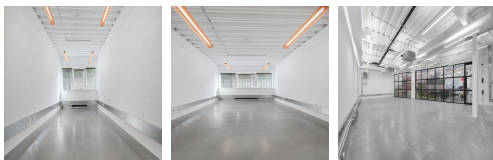
London W10 5JJ



The studios are situated in one of the most cosmopolitan, fashionable and exciting areas of London - just a few minutes from Portobello Road and its market, restaurants and bars. Transport links are excellent, with access to the London Underground network available from Westbourne Park Station, served by Circle and Hammersmith & City Line trains. There are also various bus services operating in the area. The famous Hyde Park is a short distance away and many more of London's landmarks are easily accessible from this location.



This centre is one of Britain's most imaginative office and studio complexes where design, service and location combine to provide a unique environment. The work studios are ideal for visual arts and multi-media based businesses. The building fosters an atmosphere where forward thinking people can connect and ideas will develop and prosper. The centre provides office and studio space on flexible lease terms from 243-797 sq ft and event and professional meeting room space. Other amenities available on-site are reception services, a management team, IT support, conference facilities and parking spaces. EPC Rating C.



transport links

Underground	Westbourne Park
Train Station	Euston Station
Road Link	N/A
Airport	London City Airport

Leased Spaces

- **Price** : Â£3 pcm
- **Min Price** : Â£3 pcm
- **Min Size** : 4 sq ft
- **Max Size** : 100 sq ft
- **Total Size** : 4664 sq ft
- **Min Term** : 6 mnths
- **Max Term** : 24 mnths