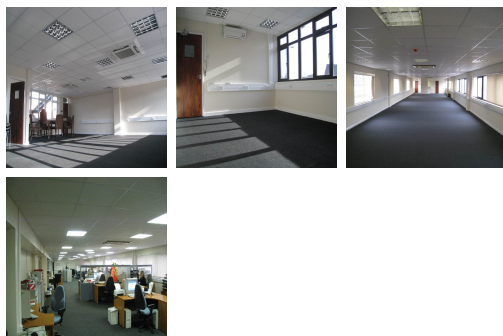


London House Business Centre

Crayford DA1 4SL



This business park is located on the A206 dual carriageway which runs from the M25c jct 1a to Central London. The M25 is just 3 miles away, the A2 slightly less and central London 12 miles away. The park is only 700 yards from the nearest station, while the A206 is a major bus route with stops directly outside. A parade of shops is located just 300 yards away and Crayford centre, with its restaurants, shops and other amenities, is under a mile away.

This business centre is a newly refurbished office building, offering a variety of modern, well-presented offices suitable for companies at any stage of their business development but offered at budget prices and with flexible lease terms. The all-inclusive packages mean that tenants pay a one-off monthly or quarterly charge and we take care of the rest leaving the client to concentrate on their business. At £18 per sq ft inclusive cost of rent, rates and service charge. EPC Rating D.

transport links

Underground	N/A
Train Station	Eurostar International Ltd
Road Link	N/A
Airport	London City Airport

Leased Spaces

- **Price** : £10 pcm
- **Min Price** : £10 pcm
- **Min Size** : 1 sq ft
- **Max Size** : 12 sq ft
- **Total Size** : 5000 sq ft
- **Min Term** : 1 mnths
- **Max Term** : 12 mnths