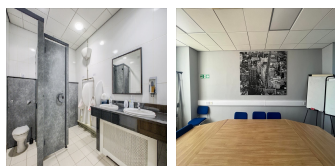
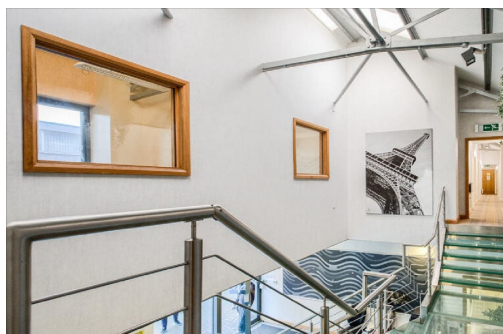


Serviced Office Space UK

118 High Street

Birmingham B23 6BG



This centre is located in the centre of Erdington, approximately 4 miles north of Birmingham city centre and 3 miles south of Sutton Coldfield. The area has very strong communication links with access to junction 6 of the M6 motorway only 2 miles to the south and the main A38(M), giving direct access to Birmingham city centre. Erdington train station is only 5 minutes away and provides trains direct to Birmingham New Street. There is also a regular bus service to Birmingham city centre, Sutton Coldfield and north to Lichfield.

This business centre offers several high-quality services and facilities such as modern, fully furnished offices, spacious meeting and conference rooms, state-of-the-art internet and network access, professional and friendly reception services, 24-hour access and security for flexibility and peace of mind. The workspace is air-conditioned, making for a comfortable working environment. Parking spaces are great for those driving to work or for on-site visitors for business meetings. The offices are suitable for several different business types and are the ideal workspace for anyone looking in this area.

transport links

Underground	N/A
Train Station	Birmingham Moor Street Station
Road Link	N/A
Airport	Birmingham Airport

Virtual Office

- **Price** : Â£30 pcm
- **Min Price** : Â£30 pcm
- **Min Term** : 6 mnths
- **Max Term** : 1000 mnths