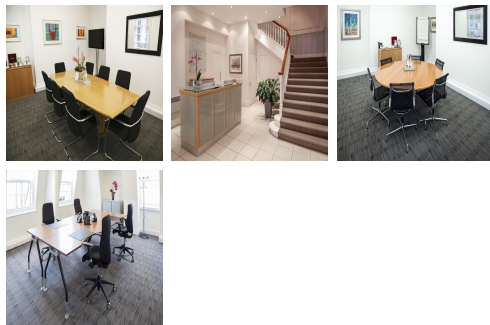


Serviced Office Space UK

28 Grosvenor Street

London W1K 4QR



This workspace is in an ideal location in the heart of Mayfair. Bond Street and Green Park Underground stations are within easy walking distance, making the centre accessible. There are high-end shops located in the area, including Selfridges, John Lewis and Partners and Liberty London. Hotels are in good supply, as are cafes, bars and restaurants, great for lunchtime and after work. The centre is accessible from almost every transport link, placing tenants and their teams in a well-connected and easily accessible location.

This ultra-modern business centre has amenities that are affordable and meaningful. Sleek, private office space is available that boosts productivity. Members can also enjoy micro-roasted coffee and fresh fruit water. This stylish contemporary building has an entrance that makes a statement as the first impression for guests. Spacious, fully-furnished offices offer a team somewhere to work comfortably, where members can move in and get started - no need for time wasted setting up various desks. The refined design and stunning landmark architecture are locally renowned as a commercially significant business establishment incorporating a neutral palette, international style, and industrial materials to create an elegant and fun workspace.

transport links

Underground	Bond Street
Train Station	Oxford Circus Underground Station
Road Link	N/A
Airport	London City Airport

Serviced Offices

- **Price** : Â£725 pcm
- **Min Price** : Â£725 pcm
- **Min Size** : 1 wkstns
- **Max Size** : 30 wkstns
- **Total Size** : 70 wkstns
- **Min Term** : 3 mnths
- **Max Term** : 36 mnths