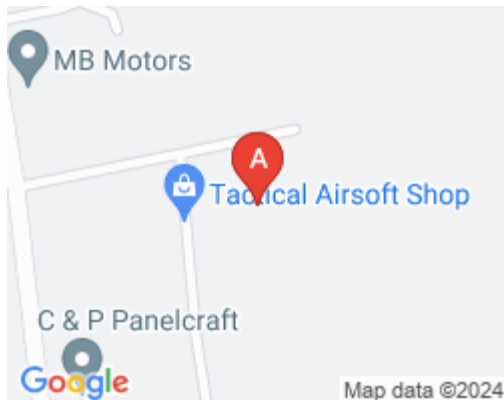


Serviced Office Space UK

Vulcan Way

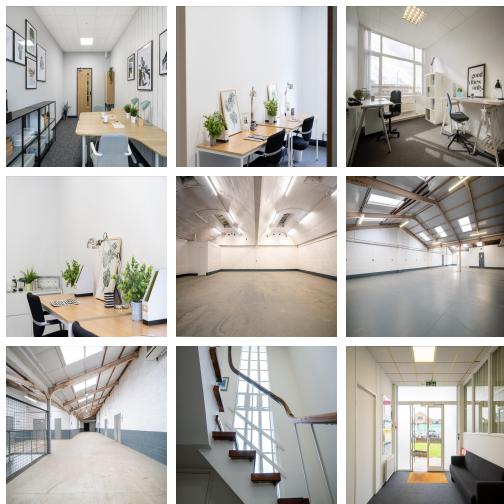
Croydon CR0 9UG



This workspace is in Croydon, 5 miles southeast of central Croydon. With Biggin Hill Airport and the A233 being only 2 miles to the southeast, this centre is easily accessible. Local bus services provide regular access to this business centre. The surrounding area offers a wide range of eateries and amenities like banks and retail shops, providing tenants with everything at their doorstep. The centre is accessible from almost every transport link, placing tenants and their teams in a well-connected and easily accessible location.



This business centre complex contains over 40 units ranging from 380 to 6,000 square feet (35-557 m²). It offers flexible business accommodation for companies seeking offices, light industrial, workshops, and storage units. The refined design and stunning landmark architecture are locally renowned as a commercially significant business establishment incorporating a neutral palette, international style, and industrial materials to create an elegant and fun workspace. This stylish contemporary building has an entrance that makes a statement as the first impression for guests. This amenity-rich complex is the perfect location for any business seeking a modern workspace to thrive.



transport links

Underground	N/A
Train Station	Clarion Collection Croydon Park Hotel
Road Link	N/A
Airport	London Biggin Hill Airport

Sublet Office Spaces

- **Price** : £215 pcm
- **Min Price** : £215 pcm
- **Min Size** : 3 wkstns
- **Max Size** : 169 wkstns
- **Total Size** : 169 wkstns
- **Min Term** : 12 mnths
- **Max Term** : 12 mnths