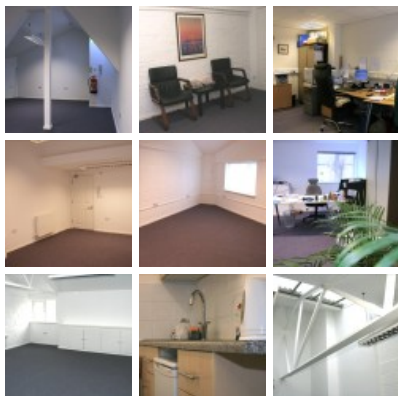
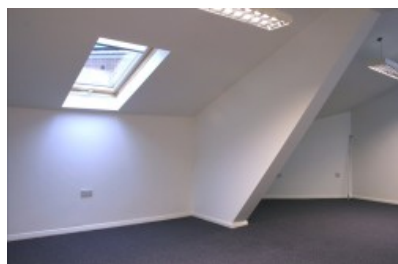




2 Thayers Farm Road

Beckenham BR3 4RH



The serviced offices at the Clock House Business Centre are ideally located in a quiet road adjacent to a main thoroughfare which offers a wide choice of transport options such as multiple bus routes and two railway stations which will take straight into Central London: Clock House Station to London Charing Cross and Cannon Street (1mn walk) and Kent House Station (5mn walk) to London Victoria station. Furthermore the Tramlink stop to Croydon and Wimbledon one way and Beckenham Junction Station the other way, is only a couple of hundred yards away. A choice of convenient amenities can also be found nearby with a variety of cafes and small restaurants as well as a Sainsbury's Local supermarket A 10mn walk takes you to the lively shopping centre of Beckenham where further restaurants, bars, cafes, and a wide range of shops can be found. The location provided by the Clock House Business Centre offers an ideal position not only for local businesses but also for satellites offices of larger organisations.

This business centre is proud to offer a range of offices ideally suited to small or start-up businesses or satellite offices for larger organisations. The units within this recently refurbished centre boast clean, modern lines, creating a particularly attractive working environment. This is a fully serviced business centre including business rates, heating, power, water rates, category 2 lighting, entry phone system, buildings insurance, maintenance and cleaning of common area. The centre is accessible 24 hours a day 7 days a week. Parking is available at the front of this building. On-site amenities include air conditioning, toilets and kitchen facilities. This space can be accessed by tenants 24 hours a day, 7 days a week.

transport links

Underground	Lewisham
Train Station	Clock House
Road Link	M20, M25
Airport	City Airport

Serviced Offices

- **Price** : Â£250 pcm
- **Min Price** : Â£250 pcm
- **Min Size** : 2 wkstns
- **Max Size** : 6 wkstns
- **Total Size** : 20 wkstns
- **Min Term** : 12 mnths
- **Max Term** : 36 mnths