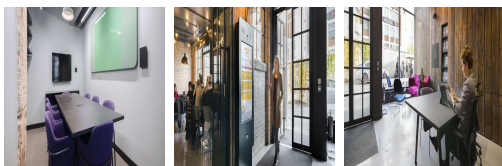
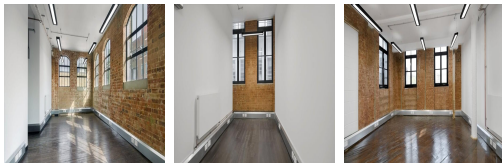


Serviced Office Space UK

London N22 6XJ



This centre is situated close to a wide range of local amenities including Wood Green Shopping Centre which only a few minutes' walk from the unit and offers a huge range of shops and restaurants. Other local facilities include several cinemas, a wide range of supermarkets and cafés. Six miles north of the City the area is served by excellent road communications being two miles south of the North Circular Road (A406), five miles east of the M1(J2) and within two miles of the A10 (Great Cambridge Road). Wood Green Underground station (Piccadilly Line) is close-by.

This centre provides commercial property to let in the form of office and studio space in the Haringey Cultural Quarter, in North London. A full range solutions are available with a goods lift and 3 phase power available. There are three units currently available at 453 sq ft, 1,201 sq ft and 1,383 sq ft respectively. On-site, there is the availability of professional meeting rooms, for those all important get-together's. There is also IT support, parking, reception services and a security system. There are shower facilities, perfect for those running or cycling to the office, and access to the space 24-hours a day. EPC Rating D.

transport links

Underground	Wood Green
Train Station	King's Cross station
Road Link	M1 Junction 1
Airport	London City Airport

Leased Spaces

- **Min Size** : 6 sq ft
- **Max Size** : 147 sq ft
- **Total Size** : 112690 sq ft
- **Min Term** : 6 mnths
- **Max Term** : 24 mnths