



# Serviced Office Space UK

---

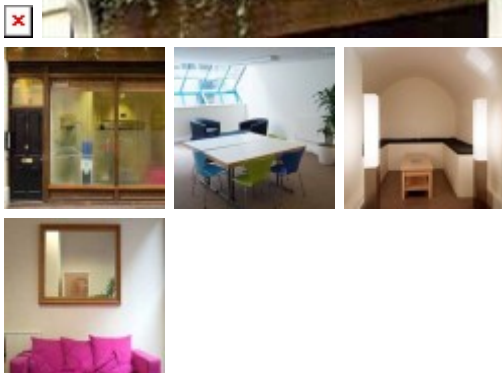
## Carlisle Street

London W1D 3DW



Located just off Soho Square, this centre is close to the many bars, restaurants and shops of Soho and Oxford Street. Tottenham Court Road tube is a three-minute walk away.

This fantastic business centre provides a high standard of offices. All the rooms are fully furnished with high-tech infrastructure pre-installed, and space is offered on an all-inclusive basis. The offices come in a variety of different sized self-contained suites, all providing a warm and intimate working environment. Each suite has period features, benefiting from great natural light and fitted out to a very high standard. This is a period-style office building very much in keeping with the area.



### transport links

**Underground  
Train Station  
Road Link  
Airport**

Tottenham Court Road  
Charing Cross  
M1 Junction 1  
London City

### Serviced offices

---

- **Price** : Â£500 pcm
- **Min Price** : Â£500 pcm
- **Max Price** : Â£600 pcm
- **Min Size** : 2 wkstns
- **Max Size** : 100 wkstns
- **Total Size** : 20 wkstns