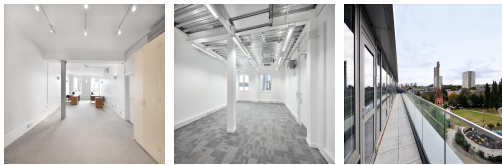
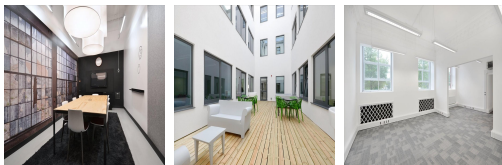
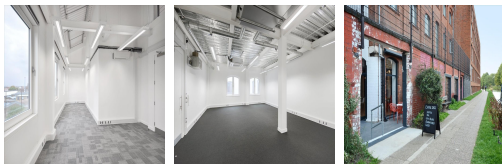


Serviced Office Space UK

Kensal Road

London W10 5BN



This centre is located just off Harrow Road (A404) which leads onto the Westway (A40). Westbourne Park (Hammersmith & City line) is the closest Underground station, whilst Queens Park railway station is also within 750m, providing easy access across the city of London. There are bars, cafes and restaurants nearby, as well as shopping facilities, supermarkets, accommodation and parks, providing somewhere relaxing to spend some time away from the office. Central London can be easily accessed from this property.

The centre situated in West London is a hub for creative businesses. The inspiring space offers a stylish edge to businesses based here and its bar and restaurant offer plenty of opportunity to relax as well. The centre is ideal for business looking for offices and studios specialising in photography, sound and film. You will have access to equipped offices with Internet access, meeting rooms, galleries, screening rooms and a host of vibrant bars and restaurants in the area. Currently available are two suites of 231 sq ft and 1,732 sq ft. Tenants benefit from access 24-hours a day as well as security. EPC Rating C.

transport links

Underground	Westbourne Park
Train Station	Euston Station
Road Link	M1 Jnct 1
Airport	London City Airport

Leased Spaces

- **Price** : Â£1 pcm
- **Min Price** : Â£1 pcm
- **Min Size** : 4 sq ft
- **Max Size** : 35 sq ft
- **Total Size** : 49513 sq ft
- **Min Term** : 6 mnths
- **Max Term** : 24 mnths