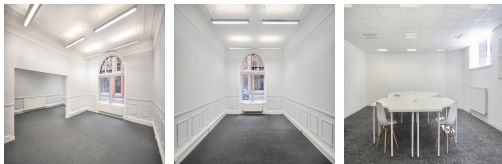


Serviced Office Space UK

Glasgow G2 6PH



The centre is located on "Wellington Street in the heart of Glasgow" placing tenants and their teams in a well-connected and easily accessible location. The centre has fantastic transport links. The centre is very close to the M8 motorway link, Glasgow Central Station and Saint-Enoch's underground station. Several restaurants, pubs, and cafes are close to this workspace. Glasgow Airport is approximately 15 minutes drive. Nearby shopping areas include Argyle Street, Saint-Enoch's Shopping Mall, and Sauchiehall Street.

This business centre is a great space that has been designed to meet the demands of any modern business. Modernly designed and sophisticatedly decorated, this centre offers an elegant working environment which will enhance the image of the client's company. The property also provides an on-site coffee shop, mail room, shower facilities, a high-speed internet connection, and an on-site concierge. The centre is accessible 24 hours a day and 7 days a week so the clients will not be confined to the traditional business hours. This building is a wonderland for all things digital - providing an ever-expanding hub of creatives with never-ending networking opportunities.

transport links

Underground	St Enoch SPT Subway Station
Train Station	Glasgow Central Station
Road Link	M8
Airport	Glasgow Airport

Serviced Offices

- **Price** : Â£230 pcm
- **Min Price** : Â£230 pcm
- **Min Size** : 1 wkstns
- **Max Size** : 100 wkstns
- **Total Size** : 100 wkstns
- **Min Term** : 1 mnths
- **Max Term** : 12 mnths