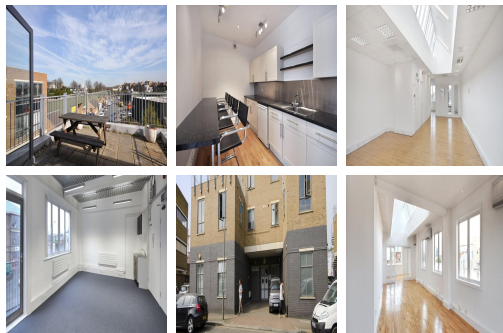
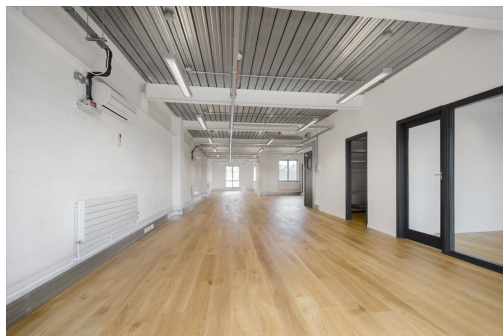


Serviced Office Space UK

4

London SW18 1SL



This development is situated on the west side of Morie Street at the junction with Ferrier Street, backing onto Swandon Way. The development is close to the shops, bars and restaurants on Old York Road, in the heart of Wandsworth Old Town. Wandsworth Town railway station is approximately two minutes' walking distance, and provides excellent connections across London. Less than an hour away is Heathrow Airport, which can also be accessed using London's fantastic and extensive public transport network.

This excellent business centre provides office and studio commercial space to let in Wandsworth, South West London. This business space is ideally suited to small and medium enterprises (SMEs). Offering competitive prices and flexible lease terms to suite your requirements. There is 24-hour access available to tenants, great if your business does not work the usual nine to five business hours. Tenants will benefit from IT support, and there is the added advantage of parking space availability, including for visitors. This space is well suited to various different business types looking for space in this area. EPC Rating C.

transport links

Underground	Subway
Train Station	Kew Bridge Railway Station
Road Link	M4 jnct 1
Airport	London City Airport

Leased Spaces

- **Min Size** : 18 sq ft
- **Max Size** : 26 sq ft
- **Total Size** : 21695 sq ft
- **Min Term** : 6 mnths
- **Max Term** : 24 mnths