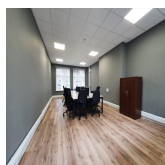
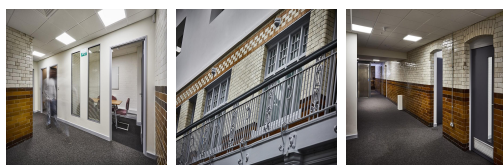
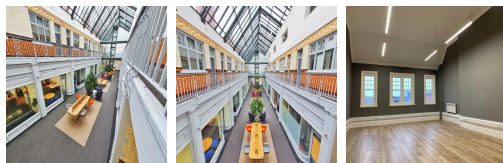


Serviced Office Space UK

Ashton-Under-Lyne OL6 7PT



Original brickwork, large, bright windows and a true community feel make the building much more than a simple base for your business needs; it's a place for your business to grow and thrive amongst like-minded entrepreneurs and established companies alike. The property is located on Stamford Street in the heart of Ashton's 'Old Town'. Clarence Arcade is one of the feature points of this area. The town now benefits from excellent road, rail, and motorway links, with Manchester Airport easily accessible.

This fantastic workspace is a new addition to a growing portfolio of serviced office space located in Ashton-under-Lyne. Original brickwork, large, bright windows and a true community feel make the building much more than a simple base for your business needs; it is a place for your business to grow and thrive amongst like-minded entrepreneurs and established companies alike. Some of the key features that are available on-site include a dedicated Customer Service Team, 24-hour access allowing for flexible working, a reception & switchboard staffed Monday to Friday 09:00 to 17:00, and lift access. EPC Rating D.

transport links

Underground	N/A
Train Station	Metrolink RATP Dev Ltd
Road Link	M67 Jnct 1
Airport	Manchester Airport

Virtual Office

- **Price** : Â£40 pcm
- **Min Price** : Â£40 pcm
- **Min Term** : 6 mnths
- **Max Term** : 36 mnths