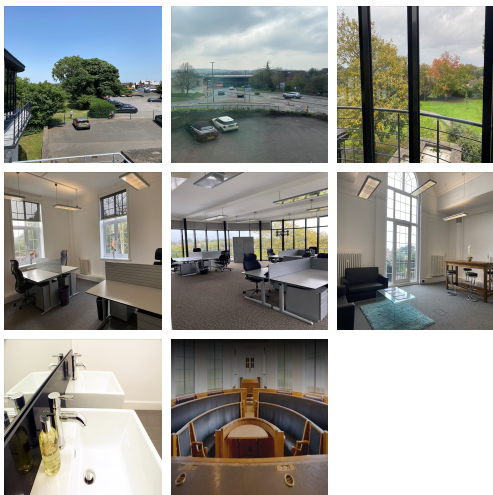


# Serviced Office Space UK

## Bull Hill

### Leatherhead KT22 7AH



The centre stands equidistant from Heathrow and Gatwick with superb links to the M25, A3, A24, M3, and M23, and excellent rail access via Waterloo, Victoria, London Bridge, Guildford and Horsham. The centre is a 4-minute walk from the mainline station and a 5-minute drive from Junction 9 on the M25. Several restaurants, cafes, shopping centres, and other local amenities are close to this centre. Fantastic transport links to the centre are available. The surrounding area offers a wide range of eateries, and amenities like banks and retail shops, providing tenants with everything at their doorstep.

This workspace offers a contemporary blend of the hi-grade interior, sensitive decor overtones, and future-proof design. There are lounges and breakout areas where tenants can take a break during a hectic workday. The business centre offers a high level of convenience, use of meeting rooms, high-speed internet access, telecoms, telephone answering, reception services and parking. Spacious, fully-furnished offices offer a team somewhere to work comfortably, where members can move in and get started - no need for time wasted setting up various desks. This ultra-modern business centre has amenities that are affordable and meaningful.

### transport links

Underground	N/A
Train Station	Oxshott
Road Link	M25
Airport	Gatwick Airport

### Serviced Offices

- **Price** : Â£350 pcm
- **Min Price** : Â£350 pcm
- **Min Size** : 2 wkstns
- **Max Size** : 21 wkstns
- **Total Size** : 155 wkstns
- **Min Term** : 12 mnths
- **Max Term** : 12 mnths