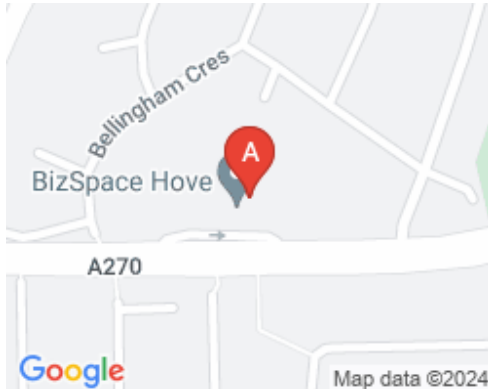


Serviced Office Space UK

Old Shoreham Road

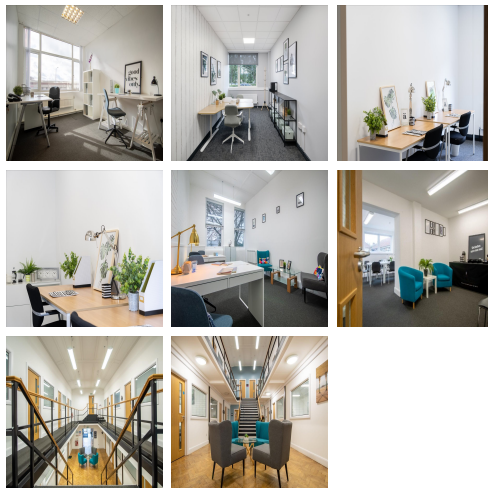
Hove BN3 7GS



The centre is very accessible. Portslade town centre and all amenities are a short walk away (less than ten minutes). A-23 and A-27 are a short drive away, and Brighton is less than twenty minutes away. Gatwick is approximately a thirty-minute car journey, making this centre very easy to reach London from the site. There is excellent rail access from Hove - Portslade rail station is a ten-minute walk away, and Brighton station is just three stops away. The centre is accessible from almost every transport link, placing tenants and their teams in a well-connected and easily accessible location.



There are business units available ranging from 80 to 1950 square feet. Workspaces are offices, studios, light industrial and storage facilities. This centre offers flexible business accommodation for startups and small and medium-sized companies. There is instant access with a short-term licence option, on-site parking spaces and an experienced management team. Accessible 24 hours a day, there is break-out space for more informal meeting and reception services and printing and copying facilities. Spacious, fully-furnished offices offer a team somewhere to work comfortably, where members can move in and get started - no need for time wasted setting up various desks.



transport links

Underground	N/A
Train Station	Portslade
Road Link	M23 Jnct. 11
Airport	Shoreham Airport

Sublet Office Spaces

- **Price** : £141 pcm
- **Min Price** : £141 pcm
- **Min Size** : 2 wkstns
- **Max Size** : 20 wkstns
- **Total Size** : 847 wkstns
- **Min Term** : 12 mnths
- **Max Term** : 120 mnths