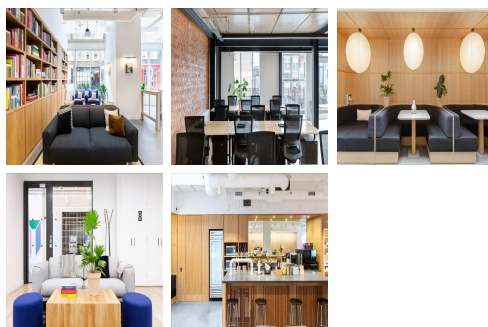


Serviced Office Space UK

8-14 Meard Street

London W1F 0EQ



The Deck is home to sensitively designed, light-filled modern offices perched above an archetypal alleyway right in the centre of Soho, London. It's the ideal place to work from. The twin Georgian storefronts of the building's original brick facade remain preserved in time, but the interiors have been completely remastered with blonde wood panelling throughout the communal and entrance spaces, complete with bulb-shaped glowing Akari light fittings, minimalist-inspired furnishings and industrial-chic touches. True Japandi design, in the heart of Soho.

The Deck is home to sensitively designed, light-filled modern offices perched above an archetypal alleyway right in the centre of Soho, London. It's the ideal place to work from. The twin Georgian storefronts of the building's original brick facade remain preserved in time, but the interiors have been completely remastered with blonde wood panelling throughout the communal and entrance spaces, complete with bulb-shaped glowing Akari light fittings, minimalist-inspired furnishings and industrial-chic touches. True Japandi design, in the heart of Soho. We are letting on a floor by floor basis with enterprise suites including dedicated bathrooms, breakout, kitchen and meeting rooms.

transport links

Underground	Piccadilly Circus
Train Station	Charing Cross Station
Road Link	N/A
Airport	London City Airport

Serviced Offices

- **Price** : £900 pcm
- **Min Price** : £900 pcm
- **Min Size** : 36 wkstns
- **Max Size** : 51 wkstns
- **Total Size** : 214 wkstns
- **Min Term** : 12 mnths
- **Max Term** : 60 mnths