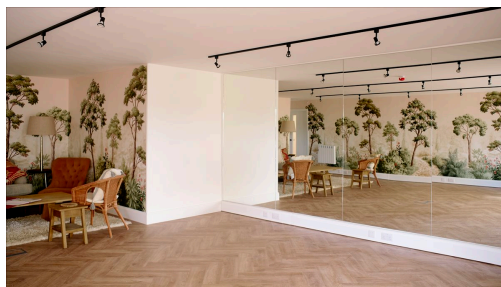
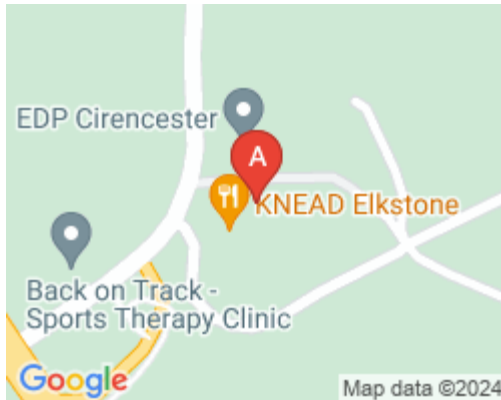


Serviced Office Space UK

Elkstone Studios

Gloucester GL53 9PQ



Conveniently nestled between Cheltenham and Cirencester, Gloucester boasts easy accessibility with plenty of free parking available. Situated in the picturesque countryside of Gloucestershire, the area offers tranquil surroundings coupled with convenient transportation options. The city is well-connected by road networks, including the M5 motorway, providing seamless travel to nearby towns and cities. Additionally, Gloucester Railway Station offers regular train services to destinations across the region, making commuting a hassle-free experience. Explore the charm of Gloucester and its surrounding areas, where the perfect blend of accessibility and natural beauty awaits.

Nestled amidst the serene beauty of the Cotswolds, the workspace in Elkstone offers a unique co-working experience in a charming countryside setting. The building exudes modernity while blending seamlessly with the natural surroundings. The office space is wonderfully light and airy, creating an inviting atmosphere for creativity and productivity. Furnished to the highest specifications, it provides a comfortable and functional workspace for teams and individuals alike. With flexible contracts and all costs included in the price, the space offers a hassle-free solution for members' workspace needs.

transport links

| | |
|---------------|-------------------------|
| Underground | N/A |
| Train Station | Cheltenham Spa |
| Road Link | N/A |
| Airport | Gloucestershire Airport |

Coworking Spaces

- **Price** : £60 pcm
- **Min Price** : £60 pcm
- **Total Size** : 16 wkstns
- **Min Term** : 1 mnths
- **Max Term** : 48 mnths