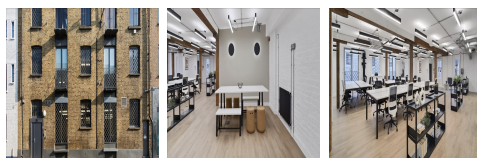
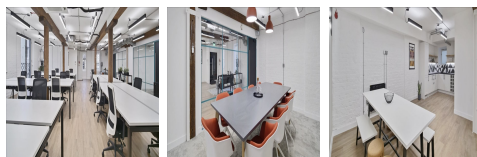
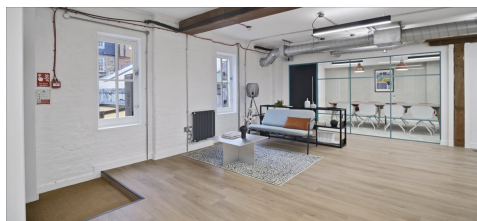


Serviced Office Space UK

56 Ayres Street

London SE1 1EU



The building is located close to many vibrant amenities including Flat Iron Square, Borough Market and Borough Yards, ensuring an unparalleled array of top-tier dining and socialising options. Beyond its vibrant surroundings, the building enjoys superb connectivity, being strategically positioned within easy walking distance of London Bridge and Waterloo mainline stations. Adding to its accessibility, Borough and Southwark underground stations are also conveniently nearby. This strategic combination of a thriving locale and excellent transport links makes this location not just an office space, but a central hub for both work and play.

Nestled in the vibrant South Bank, this reimagined warehouse provides a bright atmosphere enhanced by collaborative zones and a welcoming lounge reception. The available 1st floor, designed for productivity and comfort, encompasses 26 desks, 2 meeting rooms, a kitchen, and a versatile breakout area. This turnkey space ensures a seamless move-in experience, allowing tenants to focus on their work without the hassle of setup. Additionally, the premises feature newly refurbished private WC facilities and a shower, enhancing the overall appeal and convenience of this dynamic workspace. Elevate the work environment at the workspace - a sophisticated blend of historic charm and contemporary functionality.

transport links

Underground	Borough Station
Train Station	Waterloo Station
Road Link	N/A
Airport	London City Airport

Leased Spaces

- **Price** : Â£8 pcm
- **Min Price** : Â£8 pcm
- **Min Size** : 26 sq ft
- **Max Size** : 26 sq ft
- **Total Size** : 2450 sq ft
- **Min Term** : 24 mnths
- **Max Term** : 60 mnths