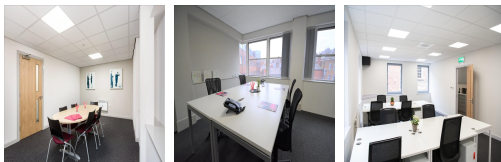


Serviced Office Space UK

Courtwood House

Sheffield S1 2DD



Courtwood House is right in the heart of Sheffield City Centre. It's your gateway to Fargate and all of the city's amenities, whether you seek shops, bars, restaurants, cafes or fitness facilities. The workspace is well-equipped to meet the demands of both growing and established businesses in the vibrant steel city. Enjoy the added convenience of on-site parking for both employees and guests, complemented by dedicated bike facilities. With round-the-clock secure access, lightning-fast internet, and on-site meeting rooms, businesses have all the essentials they need to run their business without a hitch.

Courtwood House is right in the centre of Sheffield City Centre. Your gateway to all of the city's amenities, whether you're looking for shops, bars, restaurants, cafes or fitness facilities. The workspace is well-equipped to meet the demands of both growing and established businesses in the vibrant steel city. Enjoy the added convenience of on-site parking for both employees and guests, complemented by dedicated bike storage facilities. With round-the-clock secure access, lightning-fast internet, and on-site meeting rooms, businesses have all the essentials they need to run their business without a hitch.

transport links

Underground	N/A
Train Station	Sheffield
Road Link	N/A
Airport	Sheffield Airport

Virtual Office

- **Price** : Â£40 pcm
- **Min Price** : Â£40 pcm
- **Min Term** : 1 mnths
- **Max Term** : 12 mnths