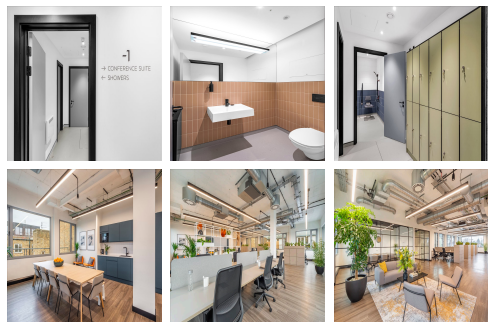
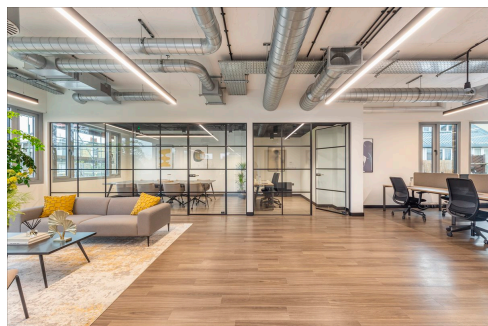


Serviced Office Space UK

147 Arlington Road

London NW1 7ET



The office benefits from being close to several transport links. Camden Town tube station is a short 4-minute walk, and both Mornington Crescent and Camden Road are a 9-minute away. A counterculture haven, the area attracts tourists, teenagers and punks. Live music in alternative clubs and stars at the Jazz Cafe and the Roundhouse create a thriving nightlife scene. Cafes are busy during the day. The office is close to several transport links. Furthermore, international airports facilitating business travel are only a few miles from this convenient location. Overall, this workspace perfectly suits teams looking for a perfect balance between accessibility and convenience.

A self-contained floor with full furnishing and fitting is ready for occupancy on a fully managed basis. Amenities 24/7 access, air conditioning, car parking, cleaning, coffee, cycle parking, fully furnished, kitchen, lift, meeting rooms, on-site staff. A collaborative workspace with everything for business professionals or teams. Modern meeting rooms and fully equipped workspaces provide an amazing work experience. The workspace also has attractive common areas like a business Lounge and café for interaction and networking or team-building sessions. Among the various amenities are a fully equipped pantry and 24-hour workspaces for flexible working.

transport links

Underground	Camden Town
Train Station	St Pancras International
Road Link	N/A
Airport	London City Airport

Serviced Offices

- **Price** : £795 pcm
- **Min Price** : £795 pcm
- **Min Size** : 30 wkstns
- **Max Size** : 41 wkstns
- **Total Size** : 41 wkstns
- **Min Term** : 12 mnths
- **Max Term** : 120 mnths