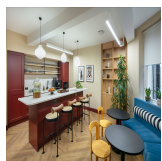
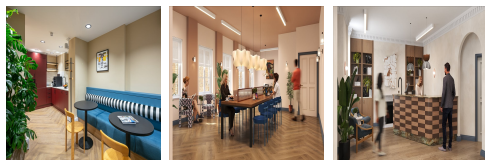
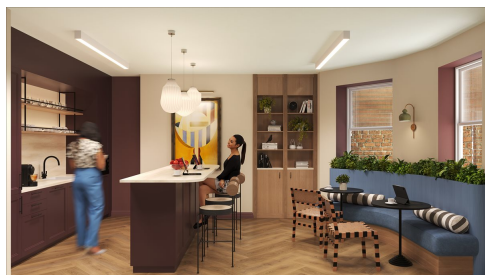


Serviced Office Space UK

34 Queen Anne Street

London W1G 8HF



Located in the prestigious area of Queen Anne Street, London, this neighbourhood boasts a blend of historic charm and modern amenities. Surrounded by elegant Georgian architecture and leafy squares, it exudes a sophisticated ambience. The area is well-connected with excellent transportation options, including nearby tube stations such as Bond Street and Oxford Circus, providing easy access to the rest of the city. Additionally, bus routes crisscross the neighbourhood, offering convenient travel options for commuters and visitors alike. Within walking distance, clients will find an array of upscale shops, fine-dining restaurants, and cultural attractions, making it a vibrant and sought-after destination for both work and leisure.

Situated in the heart of bustling London, this modern serviced office and coworking space offers a dynamic environment for professionals and entrepreneurs alike. With state-of-the-art facilities and stylishly designed interiors, it provides a vibrant atmosphere conducive to productivity and collaboration. The space features flexible workstations, private offices, and meeting rooms equipped with high-speed internet and cutting-edge technology. Members can also enjoy access to amenities such as a fully stocked kitchen, lounge areas, and wellness facilities. This coworking space caters to the diverse needs of its members, fostering a thriving community of innovation and creativity in the heart of the city.

transport links

Underground	Bond Street
Train Station	Charing Cross Station
Road Link	N/A
Airport	London City Airport

Coworking Spaces

- **Price** : Â£129 pcm
- **Min Price** : Â£129 pcm
- **Total Size** : 38 wkstns
- **Min Term** : 3 mnths
- **Max Term** : 24 mnths