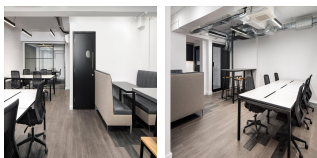
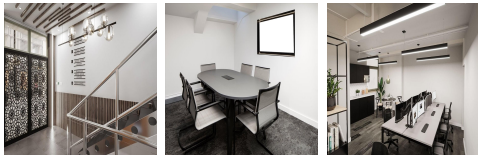
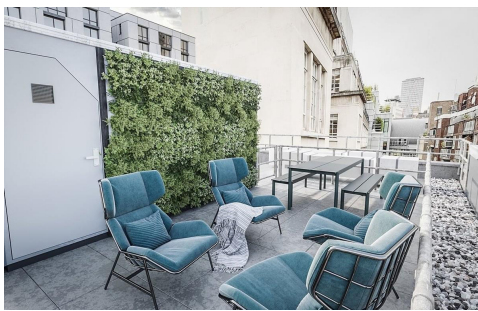
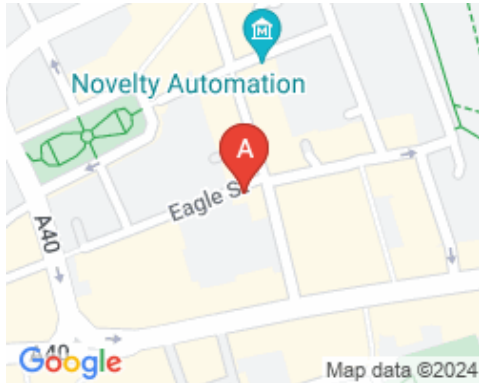


Serviced Office Space UK

35-36 Eagle Street

London WC1R 4AQ



This workspace is strategically situated in a lively neighbourhood, offering teams a conducive work environment close to essential amenities. Historic and modern buildings create a captivating backdrop in this eclectic area. There are various public transport options, including buses, taxis, and trains. Moreover, the centre is close to London City Airport, which is 7.2 miles away from the business centre. Professionals can connect to areas easily with excellent connectivity. With an abundance of hotels, restaurants, parks, and hospitals within proximity, employees can enjoy all necessary services and amenities. A thriving nightlife and renowned culinary scene offer an unforgettable work-life balance.

This collaborative workspace has everything a business professional or a team can ask for. This office space offers a mix of private offices, coworking spaces and meeting rooms. The property includes 24-hour security, CCTV, a lift, beverages, a reception service, high-speed internet, printing, and cleaning services. Additionally, the workspace gives attractive common areas like a business Lounge and café where professionals can interact and create new connections or do various team-building sessions. Some of the various amenities that the workspace offers include access to a fully equipped pantry, and the workspace is available 24 hours a day so that members can work flexibly.

transport links

Underground	Holborn
Train Station	Charing Cross Station
Road Link	N/A
Airport	London City Airport

Serviced Offices

- **Price** : Â£550 pcm
- **Min Price** : Â£550 pcm
- **Min Size** : 10 wkstns
- **Max Size** : 10 wkstns
- **Total Size** : 20 wkstns
- **Min Term** : 12 mnths
- **Max Term** : 60 mnths