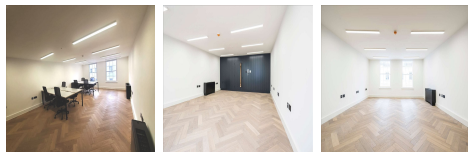
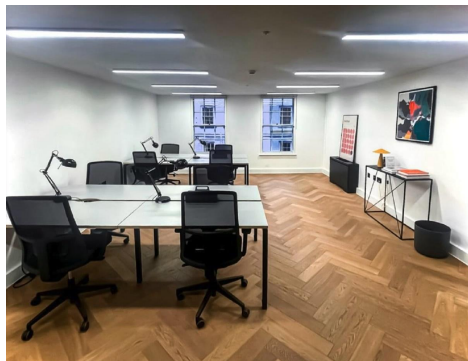


Serviced Office Space UK

30 Berwick Street

London W1F 8RH



Stunning sash windows overlook Berwick Street from the space, which is close to the famous food market. Excellent transport links are available, with the newly completed Elizabeth Line accessible in under 5 minutes and Oxford Circus only a short walk away. Soho's energetic streets, in the West End, offer a variety of dining, nightlife, and shopping options. Dean, Frith, Beak, and Old Compton streets are lively day and night, and Ronnie Scott's Jazz Club, a long-running venue, is also there. Shaftesbury Avenue attracts theatre-goers, while Carnaby, Oxford and Regent streets and the iconic Liberty's department store draw shoppers.

The space has stunning sash windows that overlook Berwick Street. A renowned designer recently refurbished it, adding stunning timber flooring, LED lighting and modern shared kitchen facilities. The unit has a versatile rectangular shape that can every space comfortably, with an adjacent meeting room or soft seating area. The site is comprehensively managed by, offering plug-and-play space that is ready to use from Day 1. This unique office space boasts a plethora of features that can accommodate any team's needs and promote efficient work. From spacious, air-conditioned offices to fully furnished break-out areas, the space provides ample room for movement. The light-filled meeting rooms offer a vibrant and conducive environment for brainstorming, while the superfast WiFi ensures maximum productivity.

transport links

Underground	Tottenham Court Road
Train Station	Charing Cross Station
Road Link	N/A
Airport	London City Airport

Serviced Offices

- **Price** : £525 pcm
- **Min Price** : £525 pcm
- **Min Size** : 2 wkstns
- **Max Size** : 8 wkstns
- **Total Size** : 8 wkstns
- **Min Term** : 6 mnths
- **Max Term** : 12 mnths