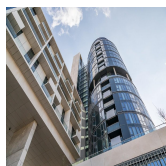
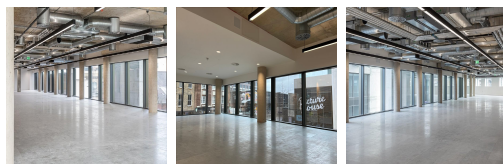
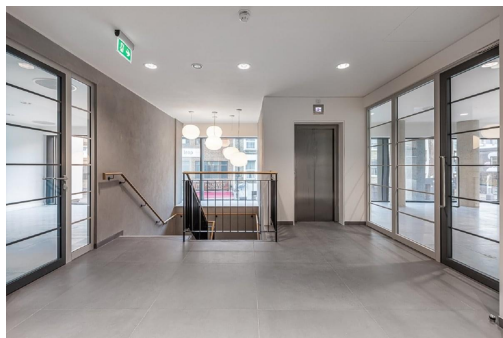


Serviced Office Space UK

3 City North Place

London N4 3HQ



Located opposite Finsbury Park station, This centre has excellent transport links to Central London and beyond, with Oxford Circus only 9 minutes away by the Victoria Line. The development consists of four buildings, each with its character and style, situated above and adjacent to the station. Some amenities include a Gymbox, Gails, Rosa's Thai, Honest Burgers, Neat Burgers, Boulangerie Bon Martin and a Picturehouse cinema. Fantastic transport links are available due to the central location of this space.

This centre is a great space designed to meet the demands of any modern business. This exceptional office space offers an unparalleled working environment with all the necessary features to increase team productivity and efficiency. With spacious, air-conditioned offices, team members can move around with ease and comfort. Multiple break-out areas offer opportunities for brainstorming and holding meetings in brightly lit rooms. Superfast wifi throughout the building ensures that every individual's work remains uninterrupted and productive. This space is warm and welcoming, so clients can feel at home while at work.

transport links

Underground	Arsenal
Train Station	St Pancras International
Road Link	Finsbury Park Station
Airport	London City Airport

Leased Spaces

- **Min Size** : 24 sq ft
- **Max Size** : 60 sq ft
- **Total Size** : 7239 sq ft
- **Min Term** : 36 mnths
- **Max Term** : 60 mnths