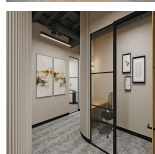
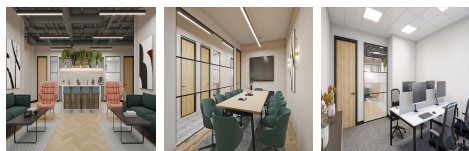
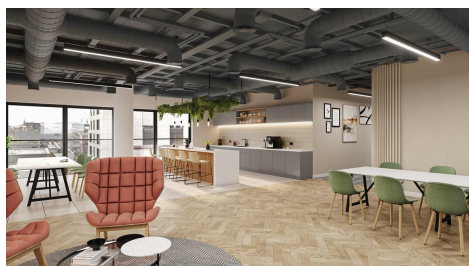
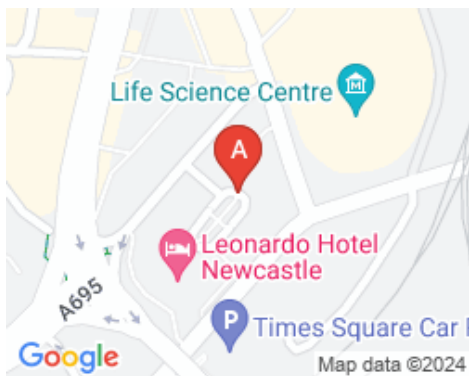


# Serviced Office Space UK

## 2 St James' Gate

Newcastle NE1 4AD



Located in the bustling heart of the city, this highly sought-after location offers everything a team requires to succeed. Newcastle is a city and metropolitan borough in Tyne and Wear, England. With excellent transport links connecting the area to the wider metropolitan network, as well as an abundance of local amenities, including world-class restaurants and shopping centres, it's the perfect location for any business. The numerous transport options, such as the train, and bus routes, make it easy to navigate around the vibrant neighbourhood quickly and conveniently. Additionally, with accessibility to international airports and a diverse selection of parks and nightlife, this location boasts the ideal environment for both work and relaxation. Overall, it's an excellent choice for any team seeking a professional yet lively working hub.

This exceptional office space was designed with efficiency in mind, boasting fully furnished, air-conditioned offices and abundant open spaces for freedom of movement. The space also features several bright, inviting meeting rooms that enable team members to brainstorm and collaborate in a vibrant atmosphere. Thanks to superfast WiFi, productivity is never hampered, and utility areas supplied with coffee and tea-making facilities provide the ideal opportunity for networking with like-minded professionals. Large windows throughout the building keep the focus exactly where it needs to be. This office space is the perfect solution for any team that values comfort, convenience, and productivity.

### transport links

<b>Underground</b>	Central Station
<b>Train Station</b>	Newcastle
<b>Road Link</b>	N/A
<b>Airport</b>	Newcastle Airport

### Serviced Offices

- **Price** : £320 pcm
- **Min Price** : £320 pcm
- **Min Size** : 1 wkstns
- **Max Size** : 397 wkstns
- **Total Size** : 397 wkstns
- **Min Term** : 3 mnths
- **Max Term** : 24 mnths