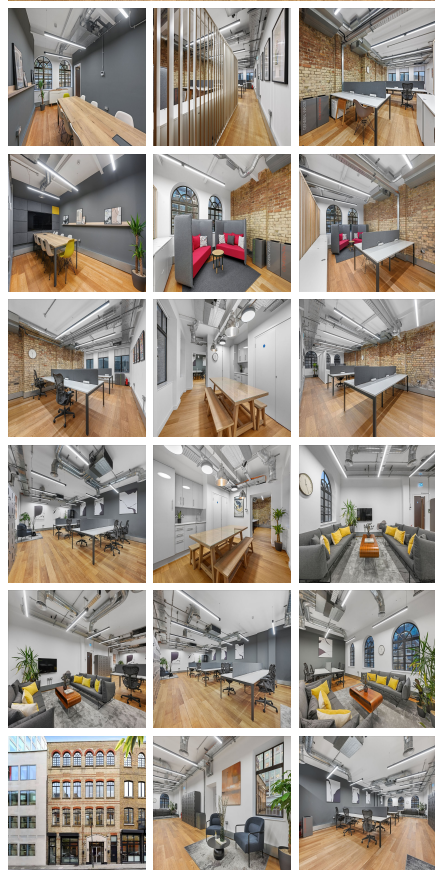
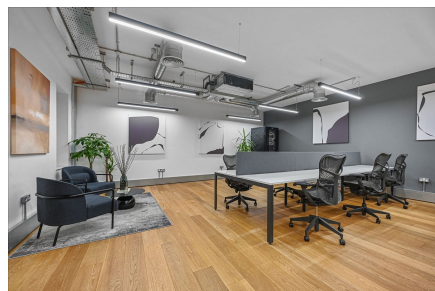


Serviced Office Space UK

40-42 Parker Street

London WC2B 5PQ



The workspace is in the heart of the city, and it is directly accessible by public transport along all major bus routes, taxis, and train stations. With an abundance of hotels, restaurants, parks, and bars within proximity, employees can enjoy all necessary services and amenities. The city's best spots make this splendid centre the best place to collaborate, innovate, and brainstorm. Overall, this workspace caters to both professional and personal needs, providing a conducive environment that fosters productivity and relaxation alike.

This centre is the perfect space for any modern business. It offers leased space with high-speed internet for professionals. The centre also provides facilities, such as parking spaces, great natural light from large windows, meeting areas, lounge spaces, telecom services, and kitchens. These features provide an atmosphere that is sure to increase productivity and efficiency. This business centre is the perfect choice for any company. Whether members prefer working alone in a quiet space or working with others in a collaborative environment, this workspace has everything needed to stay connected and productive.

transport links

Underground	Holborn
Train Station	Charing Cross Station
Road Link	N/A
Airport	London City Airport

Leased Spaces

- Price : £13 pcm
- Min Price : £13 pcm
- Min Size : 26 sq ft
- Max Size : 26 sq ft
- Total Size : 2185 sq ft
- Min Term : 24 mnths
- Max Term : 120 mnths

