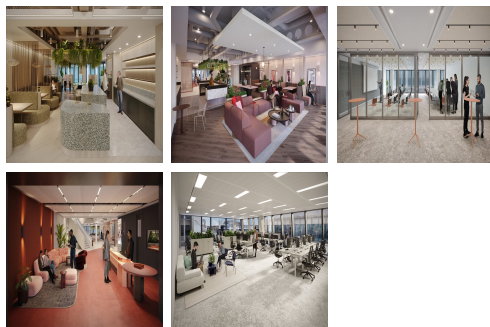
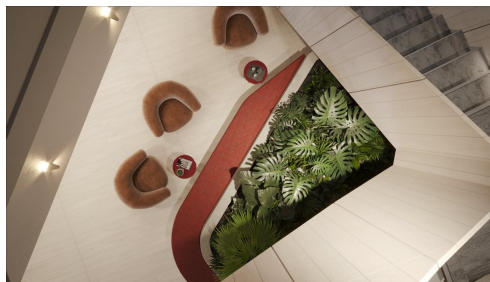


Serviced Office Space UK

St Paul's One

London EC4M 9AF



The centre is a fantastic location for any business, with easy links to restaurants, bars, top-notch amenities, and world-class shopping centres within easy reach. With its ideal location, this workspace is as close to transport links as possible, making for an easily accessible daily commute. The immediate neighbourhood is surrounded by lush green spaces and leafy streets, making it an oasis of tranquillity amidst the hustle and bustle of the nearby financial centre. The centre is accessible from almost every transport link, placing tenants and their teams in a well-connected and easily accessible location.

Spread over three floors in the financial heart of the city, the centre has impeccable sustainability credentials. Elegantly curated, the bold design pays close attention to the layering of high-quality materiality through texture, pattern and architectural form – immersing the guest in a dynamic, healthy and intuitive next-generation workspace with unexpected delight. The workspaces are thoughtfully designed private offices with access to comfortable shared spaces and enriching events. Professionally managed by an on-site concierge team and backed by Landsec expertise, Myo makes your working life as seamless and productive as possible.

transport links

| | |
|----------------------|--------------------------|
| Underground | St. Paul's Station |
| Train Station | Liverpool Street Station |
| Road Link | N/A |
| Airport | London City Airport |

Serviced Offices

- **Price** : £735 pcm
- **Min Price** : £735 pcm
- **Min Size** : 20 wkstns
- **Max Size** : 150 wkstns
- **Total Size** : 706 wkstns
- **Min Term** : 12 mnths
- **Max Term** : 60 mnths