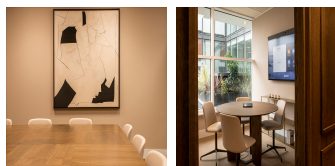
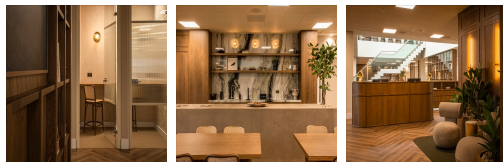
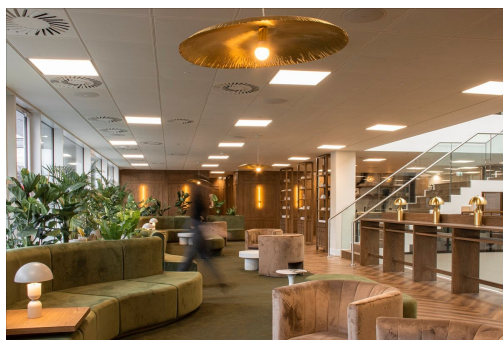


Serviced Office Space UK

68 King William Street

London EC4N 7HR



Located in the heart of London, the centre offers guests and tenants transport convenience. From taxis, buses, and trains to airports within a few miles radius of the workplace, commuting to and from the location could not be simpler. Many restaurants, cafes, hospitals, shopping centres, and fitness centres are close to the workspace. With everything available at clients' fingertips, this workplace fosters a balance between productivity and comfort, encouraging optimal engagement among the members.

68 King William Street is a landmark building set to redefine the meaning of quality workspace in the heart of the City of London. Its impressive facade and position gives it a commanding presence, impossible to miss to anyone heading North across London Bridge, our newest office is directly outside of Monument Station and the improved Bank station entrance. It boasts it's own private roof terrace as well as a gym located on the basement floor with high-end dining and a bar via the Wolseley and Wagtail all situated within number 68. The building's design is exceptional, with a suspended staircase and timeless aesthetic lending an air collaboration, comfort and calm. Enquire with us today to secure your viewing.

transport links

Underground	Monument
Train Station	Liverpool Street Station
Road Link	N/A
Airport	London City Airport

Virtual Office

- **Price** : Â£75 pcm
- **Min Price** : Â£75 pcm
- **Min Term** : 3 mnths
- **Max Term** : 12 mnths