

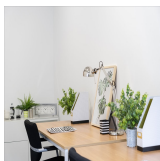
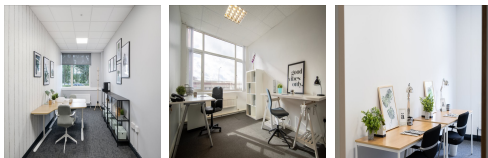
Serviced Office Space UK

Planetary Road

Willenhall WV13 3SW



This workspace is 3 miles northeast of Wolverhampton city centre, just off the Keyway (A454), and Black Country Route joins the Midlands motorway network at Junction 10 of the M6. Wolverhampton Railway Station is a short drive away and offers connections, including services to Birmingham New Street, London Euston, and Glasgow Central. Central Birmingham is only 10 miles along the M6 motorway and contains many shops, pubs, cafes, restaurants, hotels and sporting venues. This centre is conveniently located and boasts excellent transport links as well.



The superb business centre is the perfect accommodation for companies seeking offices, workshops, light industrial or storage premises. This workspace has a high standard of flexible and cost-effective offices/storage/workshops with a friendly, service-minded team, on-site maintenance, meeting rooms, and 24-hour access. All offices are available furnished or unfurnished, with either fully-serviced or part-serviced available. Each office is newly decorated, bright, clean, and secure, with a welcoming reception area, superb meeting rooms, and friendly on-site staff. This amenity-rich complex is the perfect location for any business seeking a modern workspace to thrive.

transport links

Underground	N/A
Train Station	Wolverhampton
Road Link	M6 Junction 10
Airport	Wolverhampton Halfpenny Green Airport

Sublet Office Spaces

- **Price** : £192 pcm
- **Min Price** : £192 pcm
- **Min Size** : 1 wkstns
- **Max Size** : 11 wkstns
- **Total Size** : 164 wkstns
- **Min Term** : 12 mnths
- **Max Term** : 120 mnths