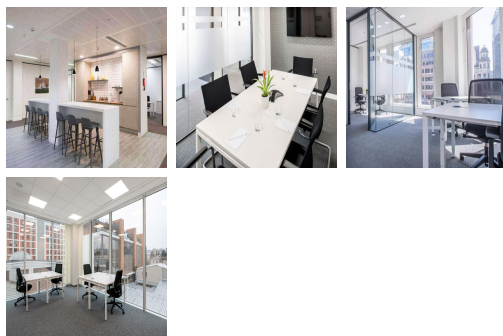
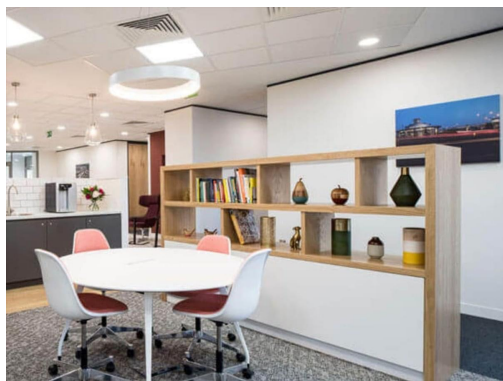


Serviced Office Space UK

27-45 Great Victoria Street

Belfast BT2 7SL



Located on the east side of Belfast, this flexible office space provides the ideal setting for establishing any business. With its central location, clients will benefit from easy access to Belfast's thriving business hub and network with other successful companies. Commuting to this workspace is simple thanks to the subway or train stations being just a short three-minute walk away. If international clients need to travel further, Belfast International Airport is only 30 kilometres away. Moreover, the location is surrounded by a multitude of diner options and bars as well as shopping stores.

This workspace offers an impressive entrance, complete with ceramic tiling, glazing, and an open stairwell that is sure to impress clients from the very beginning. The interior design is modern and stylish, spread over seven floors and thoughtfully planned to help employees focus on meeting deadlines. Large groups of like-minded individuals can collaborate in the open space, while private meeting rooms are available for more confidential discussions. The on-site team is always friendly and ready to assist with anything the client might need throughout the workday. With its professional and impersonal tone, this workspace is the perfect choice for companies looking for a sophisticated and functional space to impress their clients.

transport links

| | |
|---------------|---------------------------|
| Underground | N/A |
| Train Station | Great Victoria Street |
| Road Link | N/A |
| Airport | AIRPORT TRANSFERS BELFAST |

Virtual Office

- **Price** : £79 pcm
- **Min Price** : £79 pcm
- **Min Term** : 24 mnths
- **Max Term** : 999 mnths