

# Serviced Office Space UK

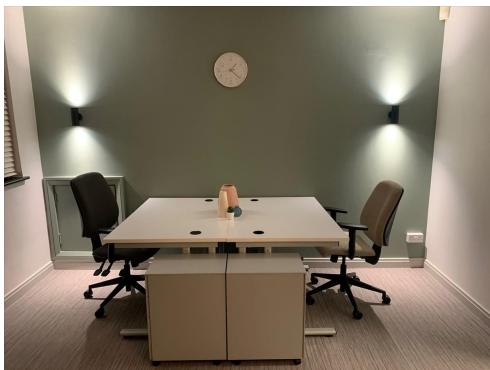
---

## Telford Road

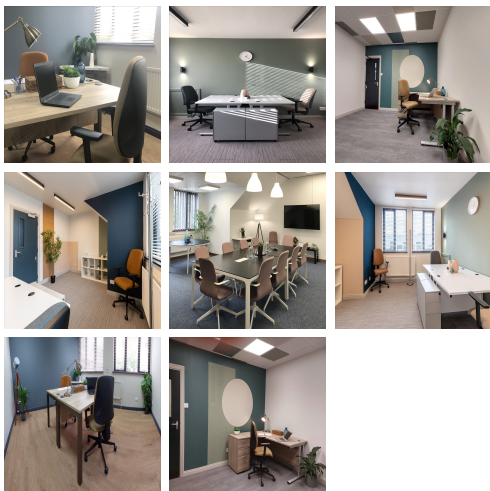
### Bicester OX26 4LD



This business centre is on the Telford Road Business Park, on the outskirts of Bicester. The M40 linking London with Birmingham via Oxford is close. Trades from Bicester run directly to London Marylebone and Birmingham from Bicester North Railway Station, a short distance away by road. London Heathrow Airport is an hour's drive from this location and has flights to various destinations. The surrounding area offers a wide range of restaurants and amenities like banks and retail shops, providing tenants with everything at their doorstep.



With a range of office options available from 1 to 20 people, the centre is the perfect location to help grow and support the business. This centre benefits from plenty of parking, two spacious meeting rooms and reception services including printing and postal facilities. The centre is undergoing a continual refurbishment program and transforming offices into bright, modern spaces designed to stimulate creativity and productivity. Tenants will have access to networking events and be part of a vibrant business community. Spacious, fully-furnished offices offer a team somewhere to work comfortably, where members can move in and get started - no need for time wasted setting up various desks.



### transport links

<b>Underground</b>	N/A
<b>Train Station</b>	Bicester North
<b>Road Link</b>	A41
<b>Airport</b>	Oxford Airport

### Serviced Offices

---

- **Price** : Â£250 pcm
- **Min Price** : Â£250 pcm
- **Min Size** : 1 wkstns
- **Max Size** : 16 wkstns
- **Total Size** : 142 wkstns
- **Min Term** : 2 mnths
- **Max Term** : 36 mnths