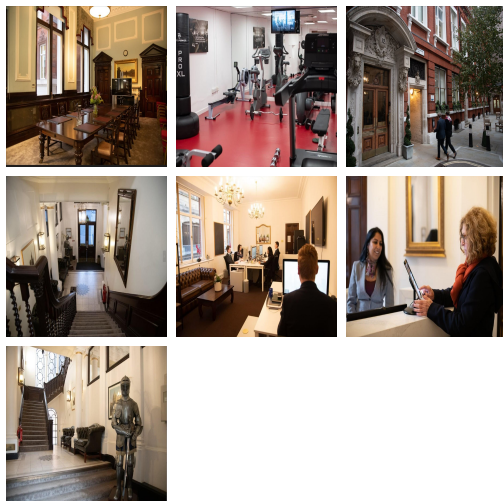
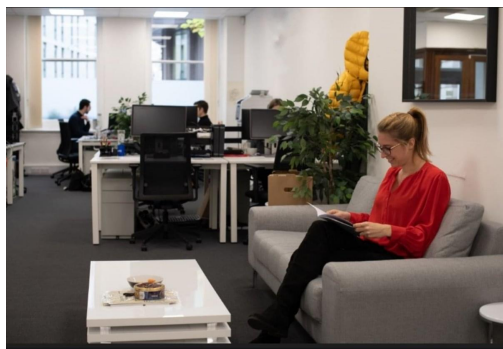


# Serviced Office Space UK

## 11 - 12 Tokenhouse Yard

London EC2R 7AS



This centre is in the heart of London's financial district. A few minutes walk from Bank station and directly behind the Bank of England. There are plenty of amenities within walking distance of the centre, including excellent places to enjoy a meal or a drink, such as The Telegraph and The Anthologist. There are also various shopping options in the area, with One New Change Shopping Centre offering well-known outlets such as Topshop and Next. The magnificent St. Paul's Cathedral is also nearby.

The centre is in the heart of the city. It offers modern office space in a beautiful period property - a five-story Grade II listed red-brick Victorian building. It has an impressive interior that matches the facade, including a grand central staircase with a decorative domed ceiling and an ornate chandelier. With convenient access, large windows with views over the Bank of England, and high ceilings, this centre is a light and welcoming place to base the business. The office accommodation, arranged over the remaining floors, including the ground floor, ranges from one to 70 workstations. In addition, there are three boardrooms available.

### transport links

<b>Underground</b>	Bank Station
<b>Train Station</b>	Bank Station
<b>Road Link</b>	M1 jnct 1
<b>Airport</b>	London City Airport

### Serviced Offices

- **Price** : Â£550 pcm
- **Min Price** : Â£550 pcm
- **Min Size** : 3 wkstns
- **Max Size** : 36 wkstns
- **Total Size** : 86 wkstns
- **Min Term** : 1 mnths
- **Max Term** : 24 mnths