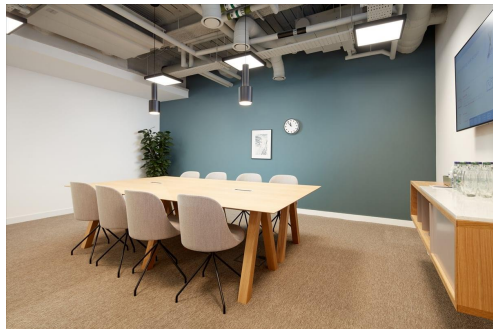


Serviced Office Space UK

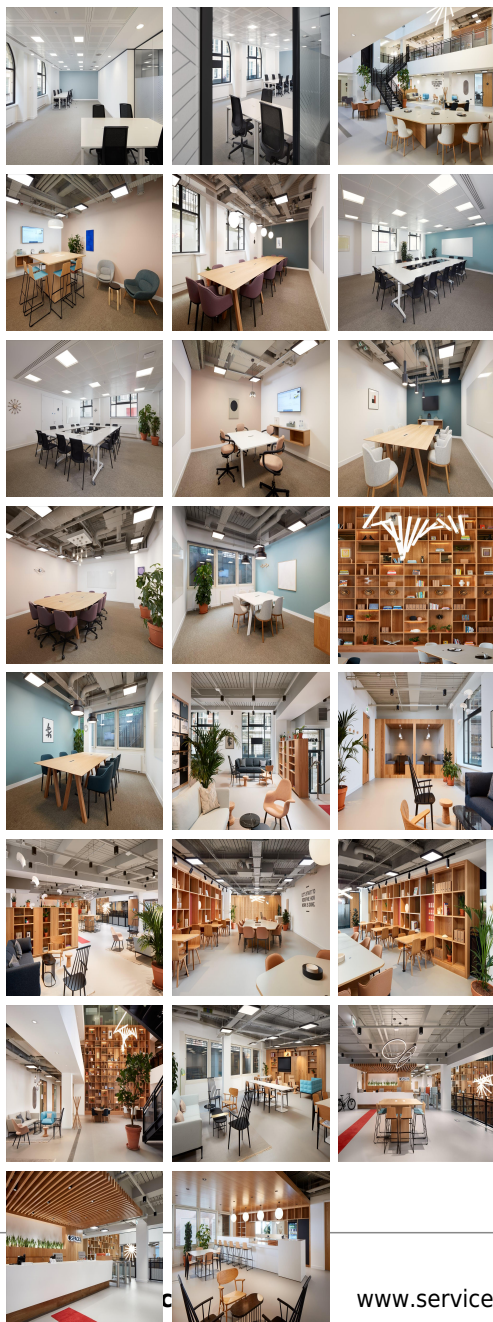
London EC2M 1NH



The workspace is centrally located in the heart of the City's financial district, adjacent to the internationally-renowned Broadgate complex. This centre is located just one minute's walk from Liverpool Street station with Tube links to Paddington, Victoria, Waterloo and King's Cross, as well as various mainline services. The workspace is perfect for financial services businesses. In the area there are various cafes, bars and restaurants including The Railway Tavern, Duck & Waffle and The Alchemist.



Your business will thrive when you base it in this centre at Liverpool St Station, in the heart of London's global financial centre. From the outside, New Broad Street House is a beautiful Victorian building, while inside it's an inspiring designer working experience that's light, airy and modern. Find the flexible space to suit your business needs, whether you want to drop into a business lounge, book a meeting room or private office, or brainstorm your next big idea in the collaborative areas. Chat with our friendly reception staff, on hand to ensure your day goes smoothly, and network with our dynamic business community. Step outside and you're just five minutes from the buzzing food and drink destination of Broadgate Circle, which hosts festivals, art installations and live music. Spark your creativity with a stroll to the gardens at Finsbury Circus and St Botolph-without-Bishopsgate or work out at Fitness First. There are bus stops almost on the doorstep. You're just two minutes' walk from Liverpool Street Tube station and it's a little further to the mainline train station. Moorgate and Bank tube stations are eight minutes away.



transport links

Underground	Bank Station
Train Station	Liverpool Street Station
Road Link	M1 jct 1
Airport	London City Airport

Virtual Office

- **Price** : Â£149 pcm
- **Min Price** : Â£149 pcm
- **Min Term** : 24 mnths
- **Max Term** : 999 mnths